

new format emerges

The left diagram shows a graph with four nodes: f_1 , f_2 , f_3 , and f_4 . The edges and their weights are: $f_1 \rightarrow f_2$ (weight 2), $f_1 \rightarrow f_3$ (weight 3), $f_2 \rightarrow f_3$ (weight 1), and $f_3 \rightarrow f_4$ (weight 1). The right diagram shows the same graph after the first iteration of the Floyd-Warshall algorithm. The distance from f_2 to f_4 is now 1, which is the sum of the distance from f_2 to f_1 (2) and the distance from f_1 to f_4 (1). The other edges remain unchanged.

2nd St

Howard St.

A map of San Francisco showing the location of the site. The site is marked with a red dot in the center of the city. Major highways are shown in blue, including Highway 101, Highway 280, and Interstate 80. The Bay Bridge is also labeled. The map includes labels for Market Street, Howard Street, and 2nd Street. The population of San Francisco is noted as 825,000.

Books have always been a part of society and culture ever since the beginning of written history. Their role is recording history, conveying messages, and entertaining has carried on generation after generation. With the development of the internet and electronic devices, it seems society has shifted towards new forms of media. One direct development is the ebook, the traditional book's electronic counterpart. And although the ebook has grew drastically in recent years, the traditional form of books and media still continues to persevere.

| Category | Time Required (Months) |
|---|------------------------|
| time required to publish an ebook | 10 |
| time required to publish a traditional book | > 24 |

| Category | Time Range (Months) |
|-------------------------------|---------------------|
| relevant information retained | 0 to 10 |
| high quality books | 10 to 24 |

Figure 1 illustrates the evolution of a building design through a series of 20 diagrams, organized into four rows and five columns (labeled b1, f1, f2, f3, f4).

The rows represent different stages of the design process:

- Row 1: Conceptual Plans** (b1, f1, f2, f3, f4) - Shows the initial conceptual plans as a grid with concentric circles.
- Row 2: Program Organized by Grid** (b1, f1, f2, f3, f4) - Shows the program organized by the grid, with program areas (circles) overlaid on the grid.
- Row 3: Program Carved Space** (b1, f1, f2, f3, f4) - Shows the program carved space, where the grid is cut out to accommodate the program.
- Row 4: Radial Stacks Carved Space** (b1, f1, f2, f3, f4) - Shows the radial stacks carved space, where the grid is cut out to accommodate the program.

The final row shows the space conceptually determined, with the final design elements highlighted in orange. The legend on the right explains the symbols used:

- Circle: conceptual plans
- Circle with dot: program
- Square: 100 sqft
- Line: stacks
- Circle with dot: vertical circulation
- Orange line: cut out

making

center of vertical circulation

floor 1 - floor 4 overlaid to find vertical circulation

radial connection between floors finds new center of circulation

The image displays a sequence of architectural diagrams. The top row consists of four square floor plans, each with orange outlines. The first plan shows a single circle with a line from the top-left corner to its center. The second plan shows four circles. The third plan shows a complex arrangement of circles and arcs. The fourth plan shows a highly irregular, organic shape with several circles. The bottom row consists of three square floor plans, each with orange outlines. The first plan shows two overlapping circles with a shaded intersection. The second plan shows three overlapping circles with a shaded intersection. The third plan shows four overlapping circles with a shaded intersection. The text 'making' is on the left. The text 'center of vertical circulation' is above the top row. The text 'floor 1 - floor 4 overlaid to find vertical circulation' is to the left of the top row. The text 'radial connection between floors finds new center of circulation' is to the left of the bottom row.

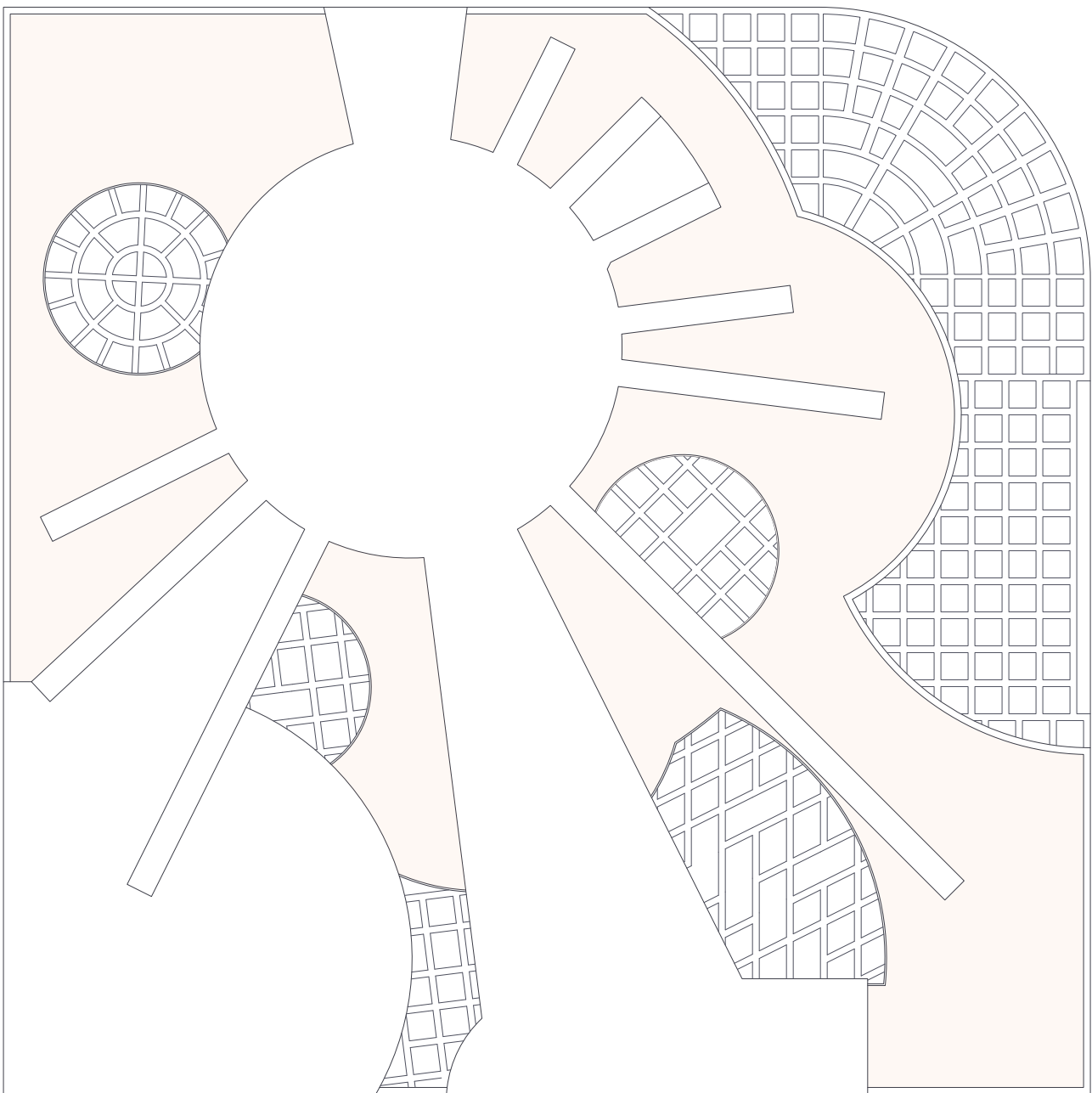
Tehama St

1/24"=1'-0"

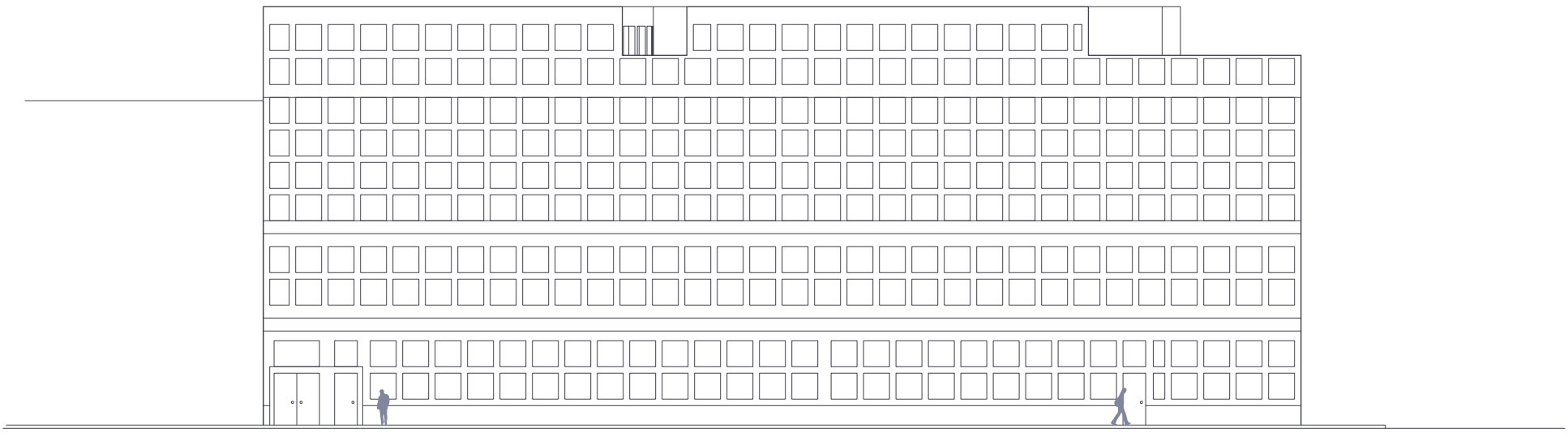


plans / elevations / sections

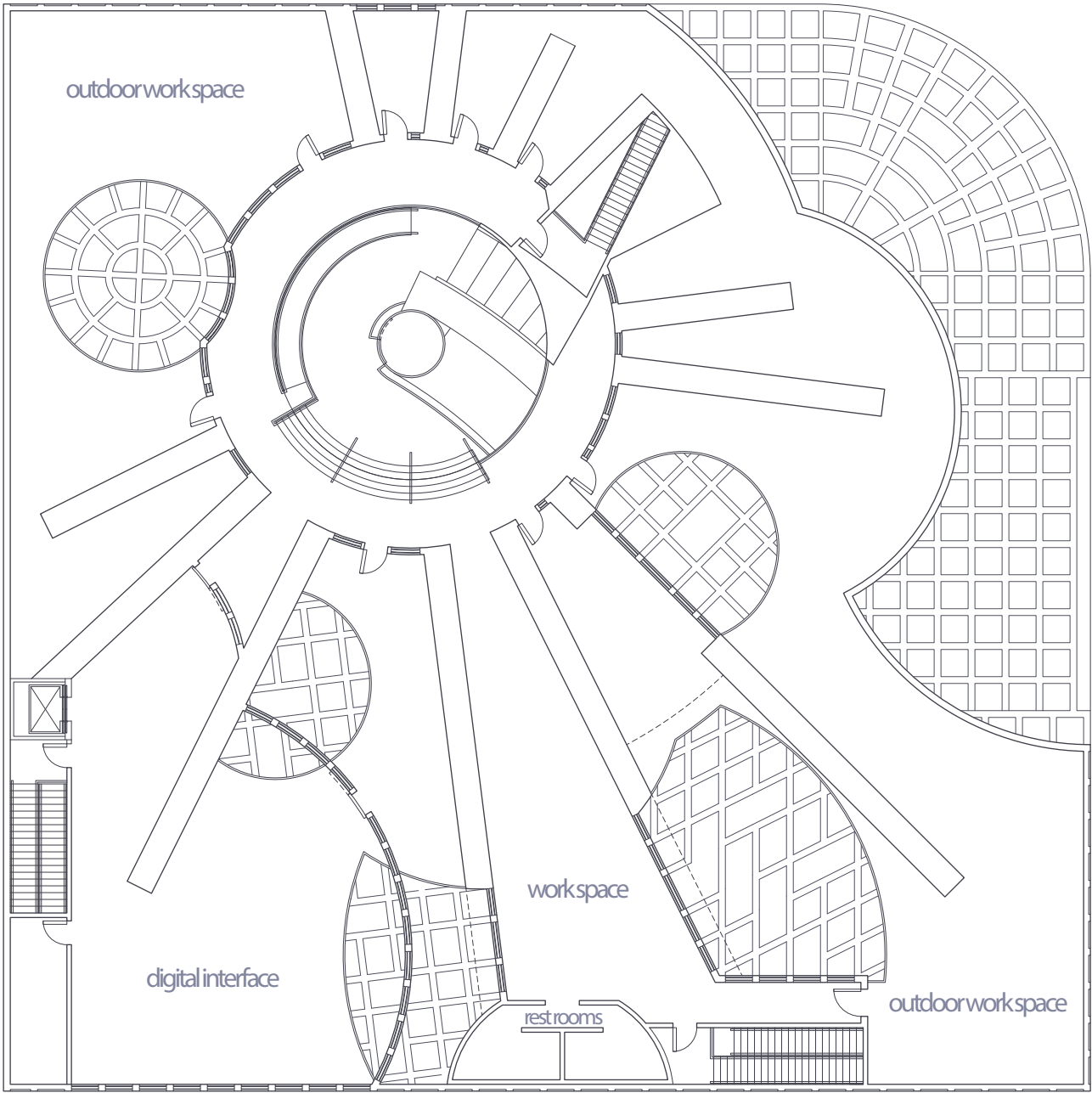
roof plan



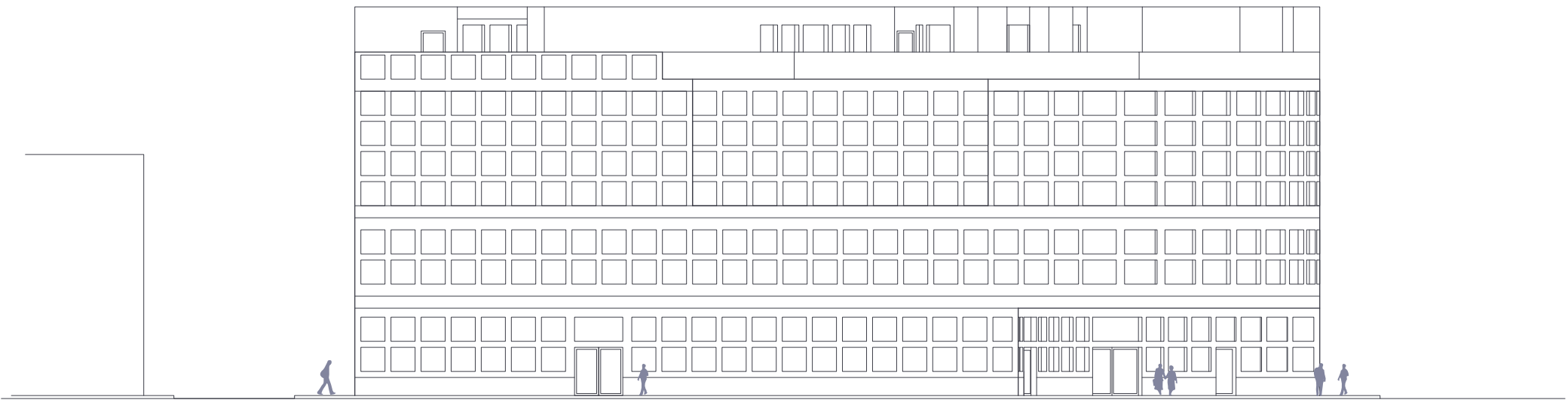
southwest elevation



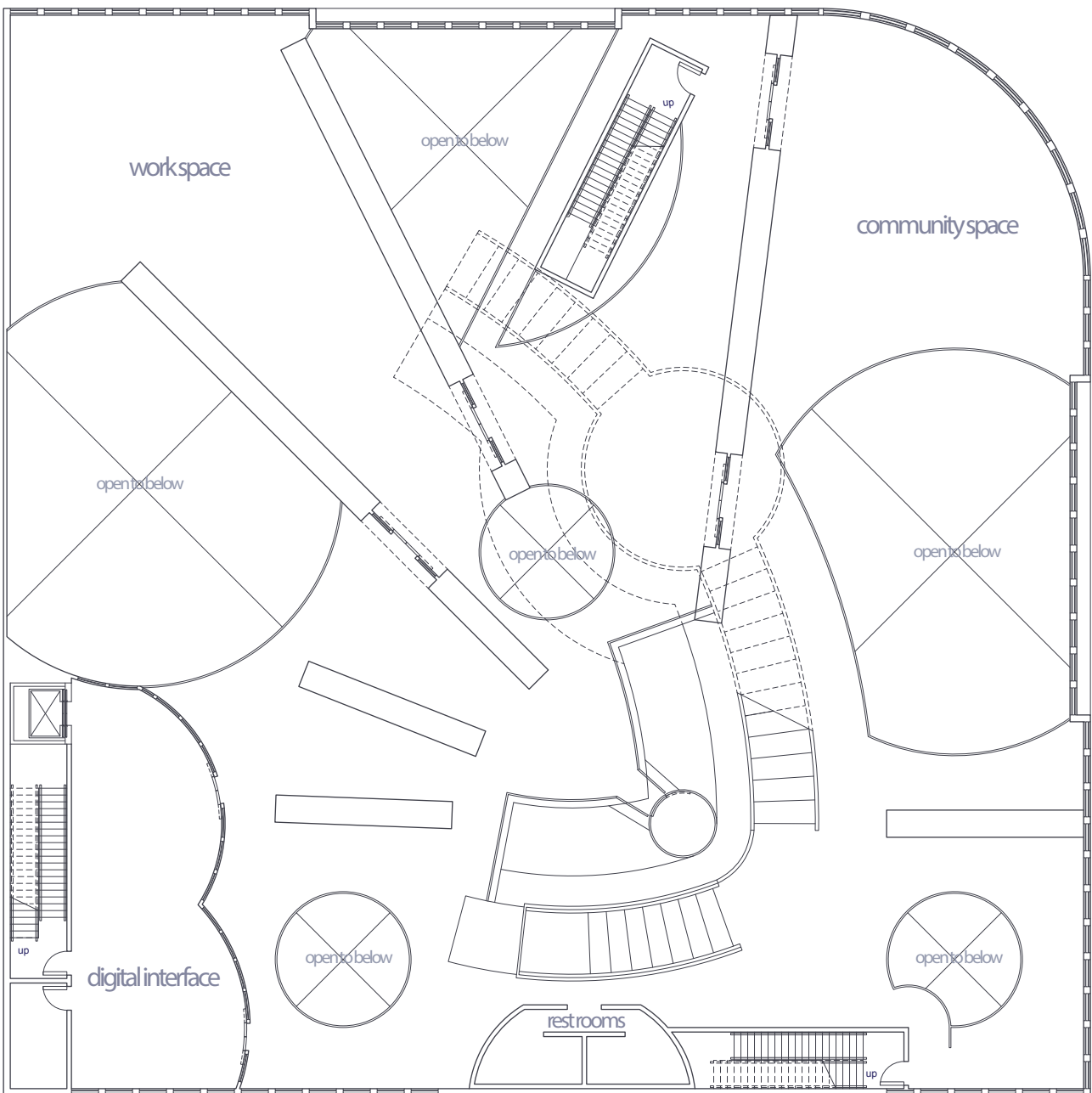
4th floor



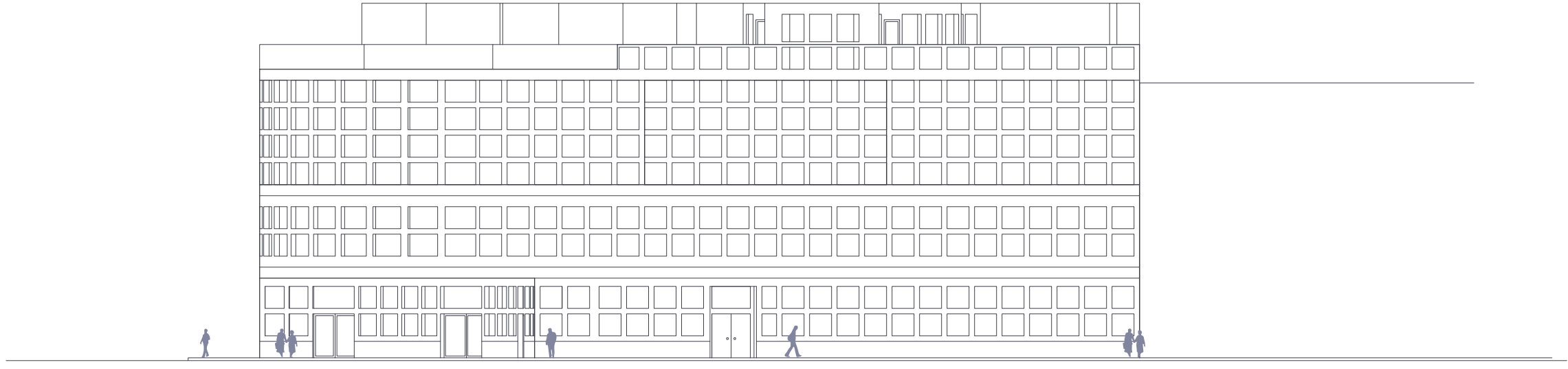
southeast elevation



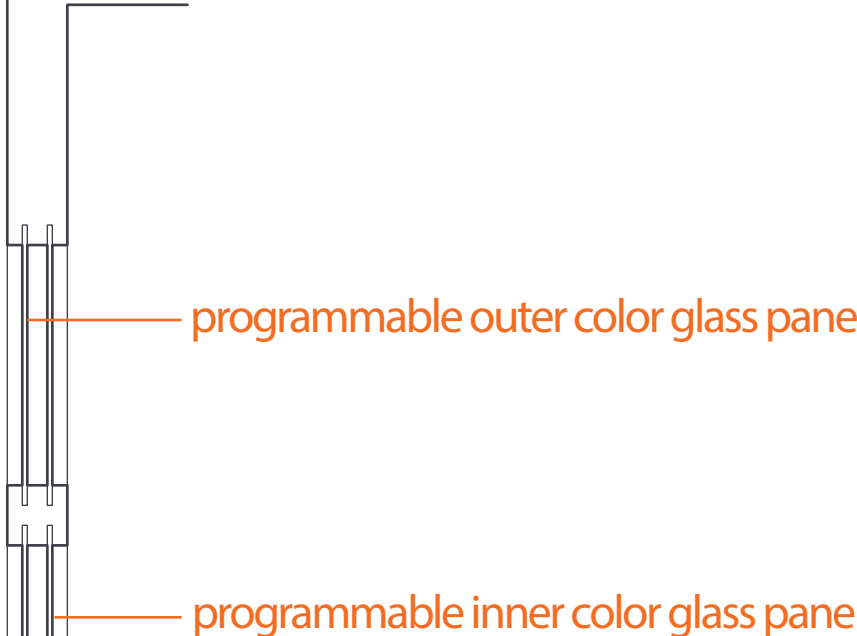
3rd floor



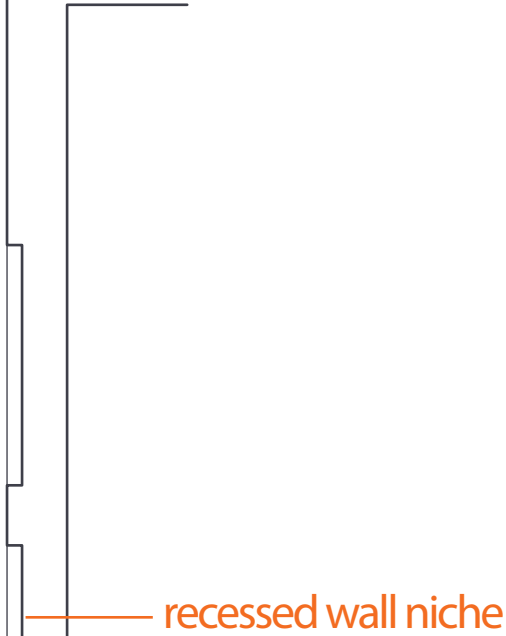
northeast elevation



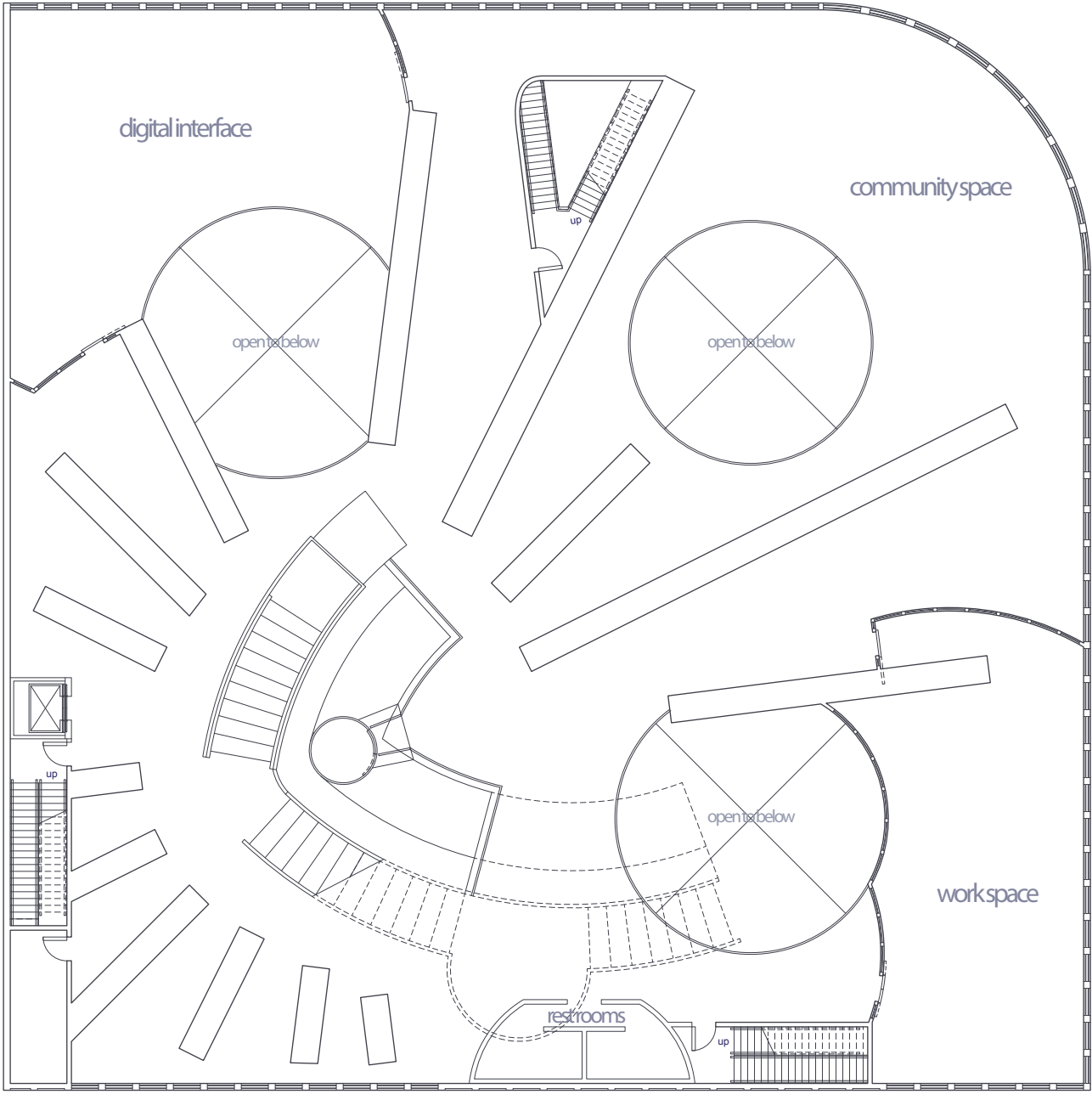
window section



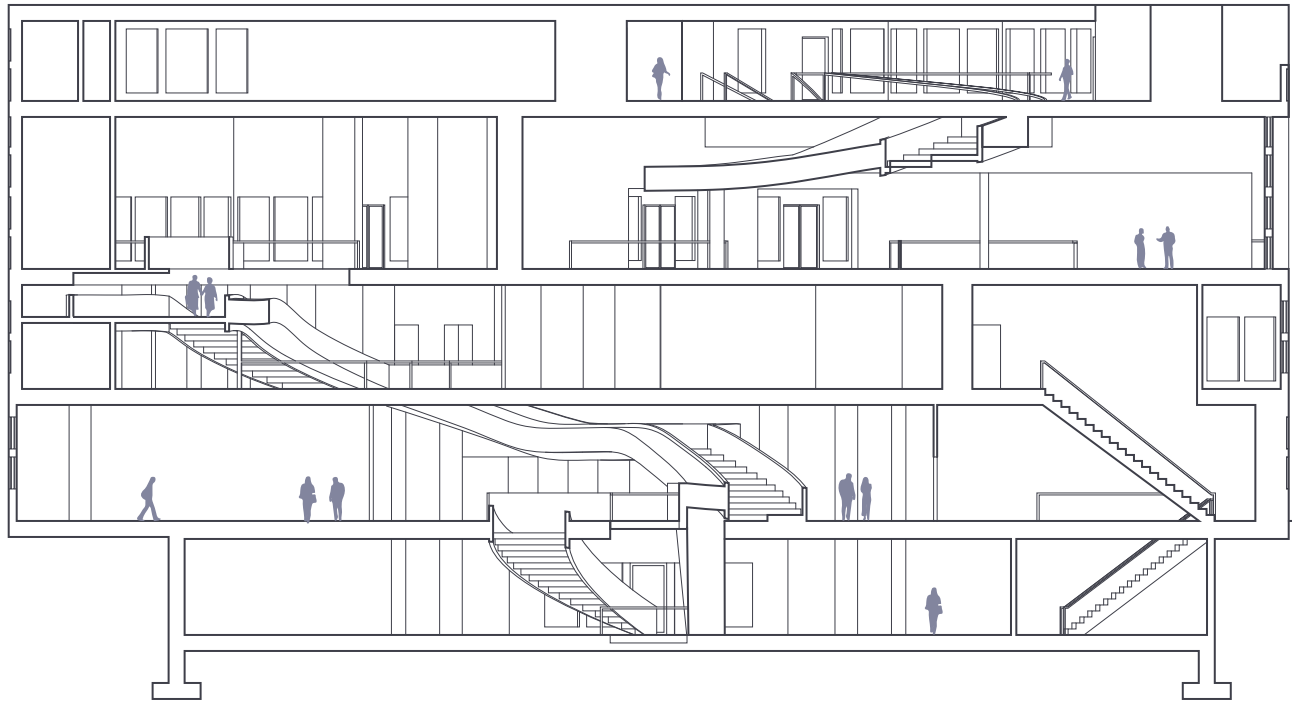
wall section



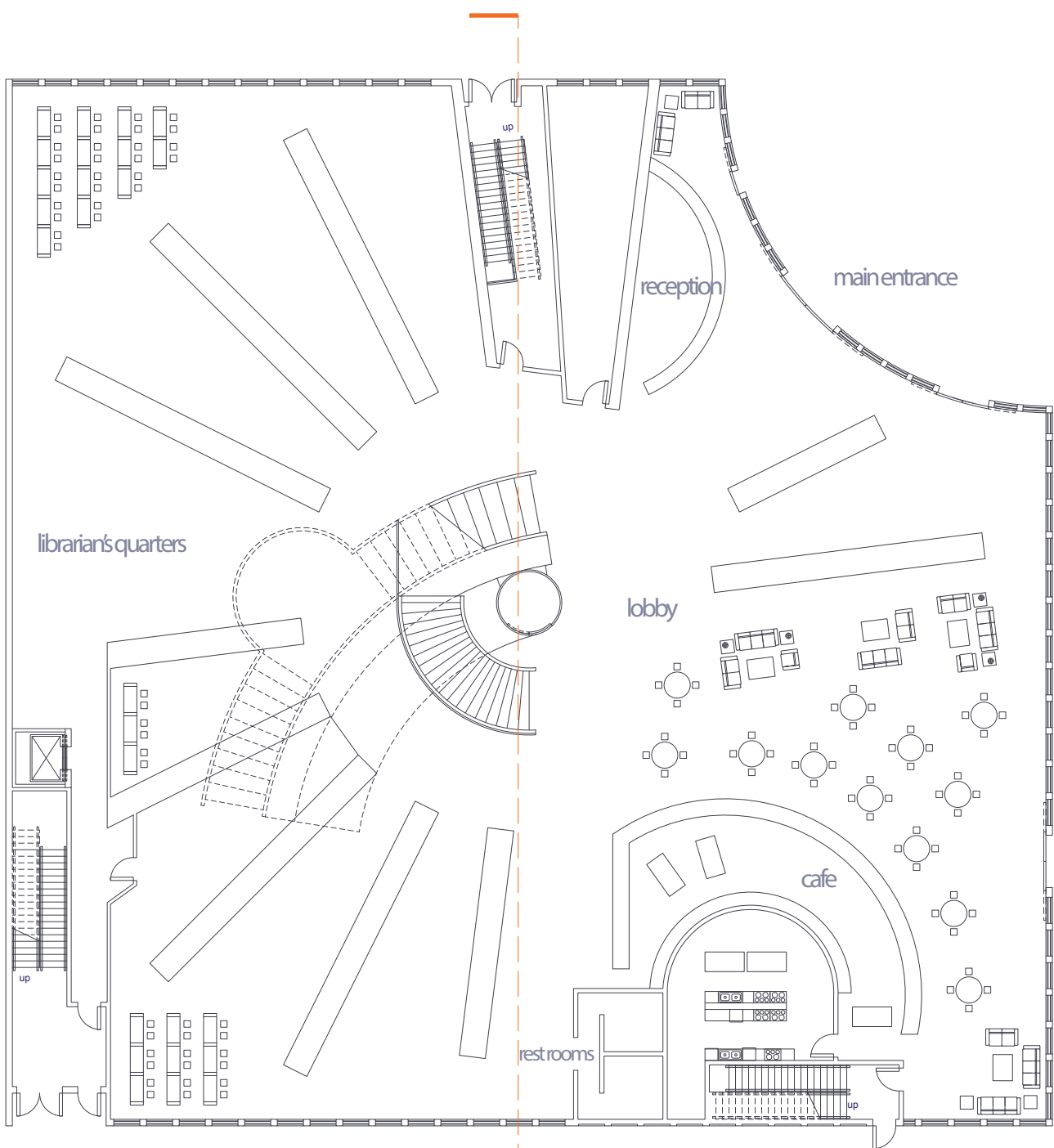
2nd floor



section looking southwest



1st floor



basement

