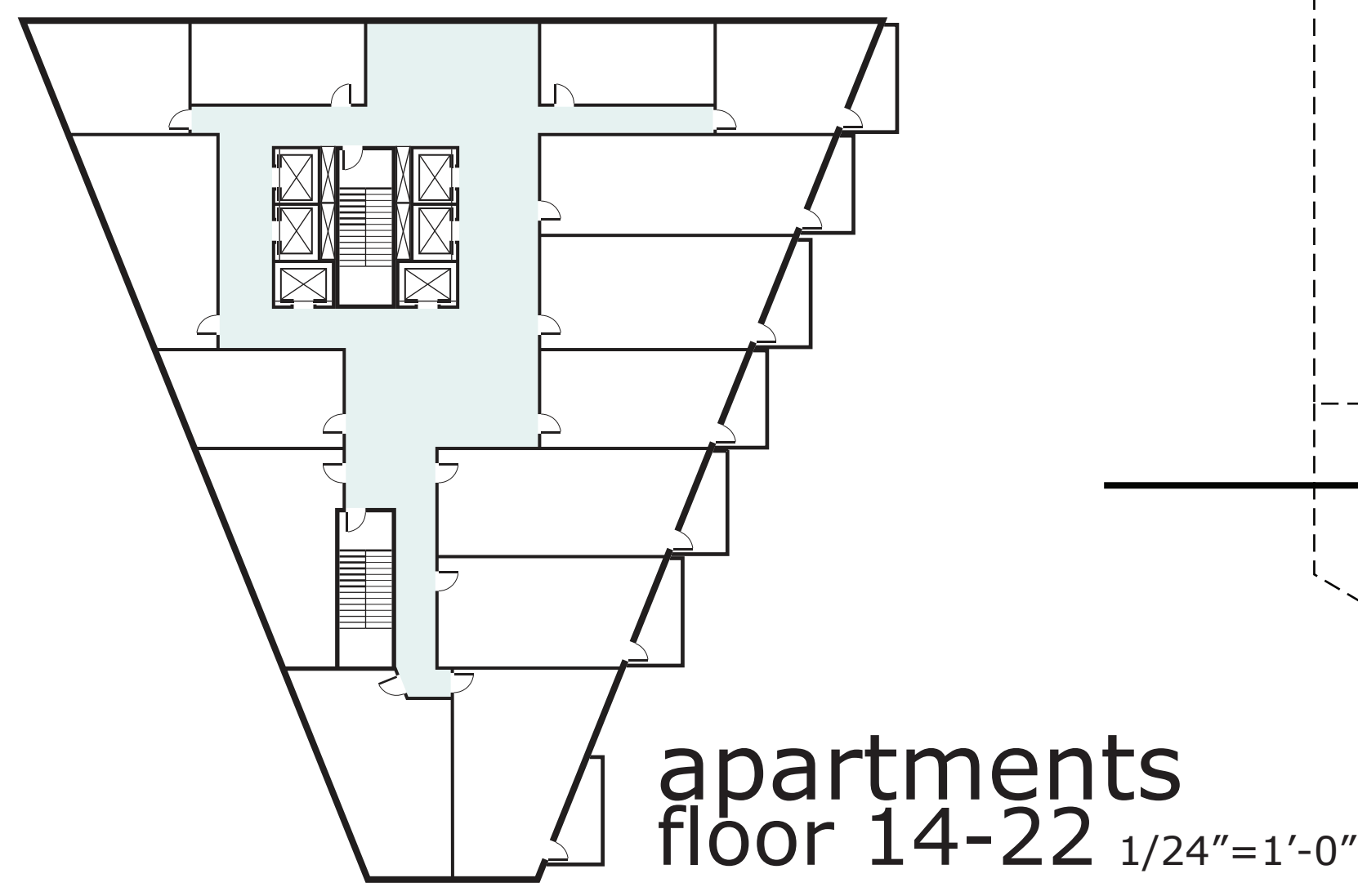
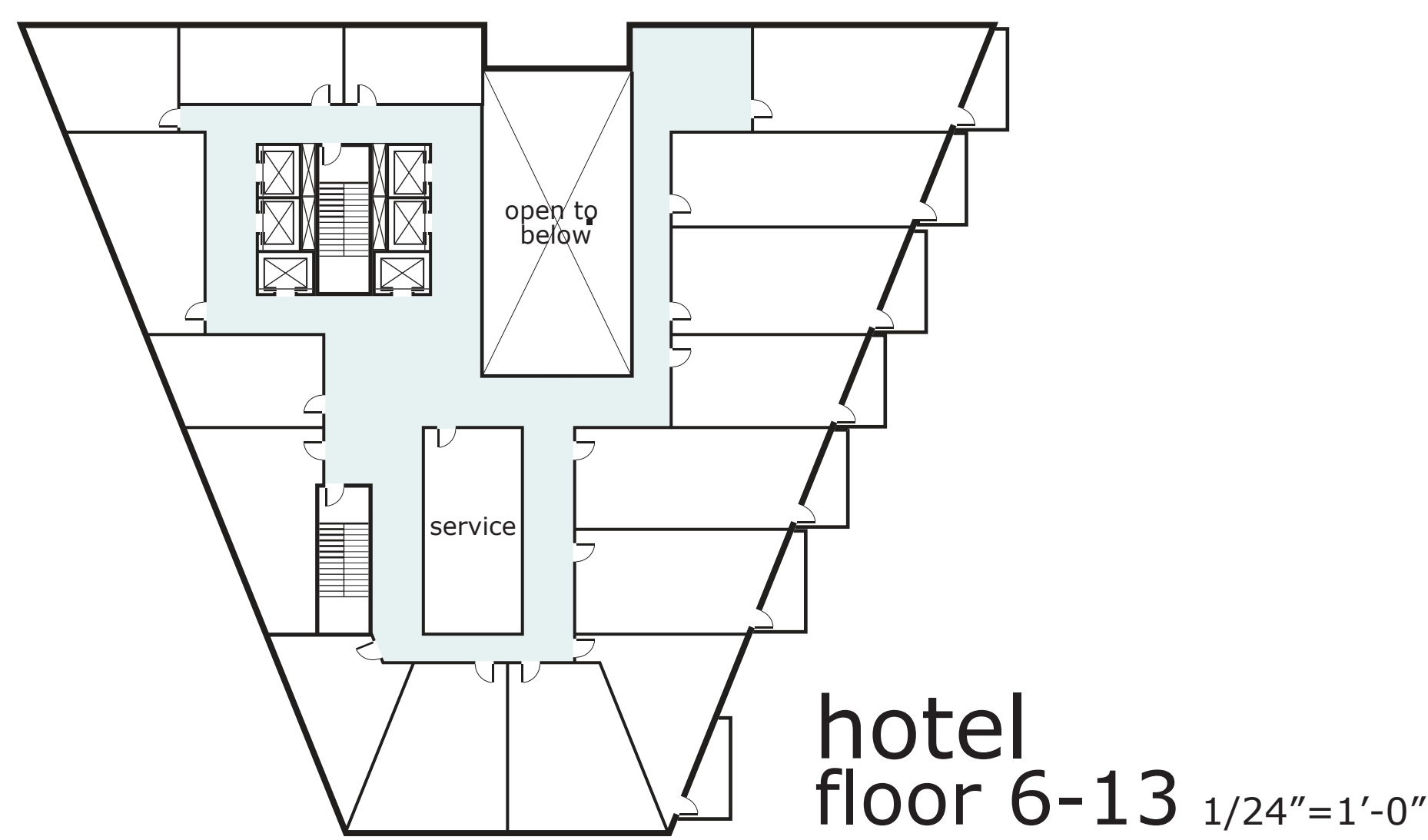


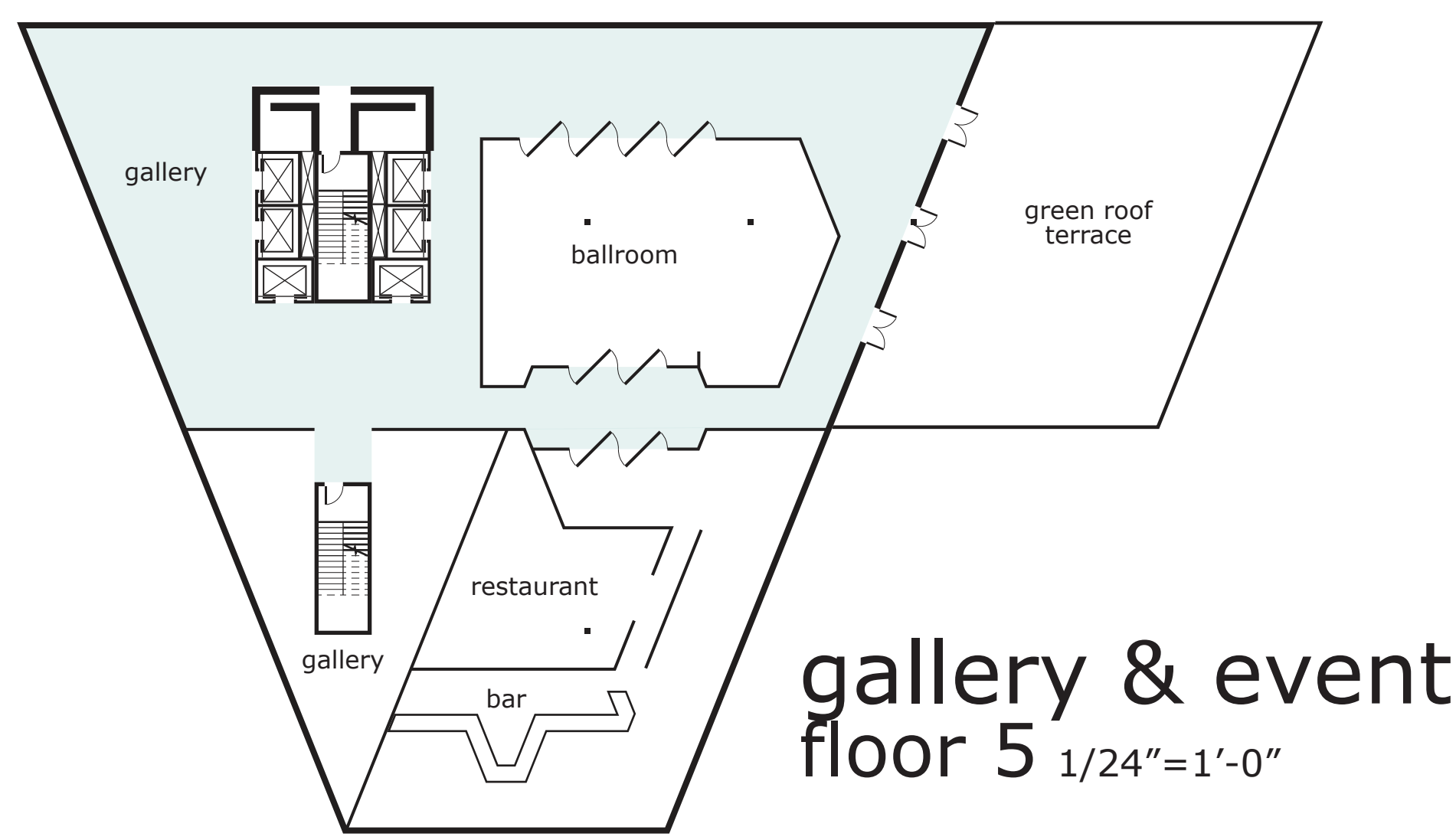
apartments  
floor 23-31 1/24"=1'-0"



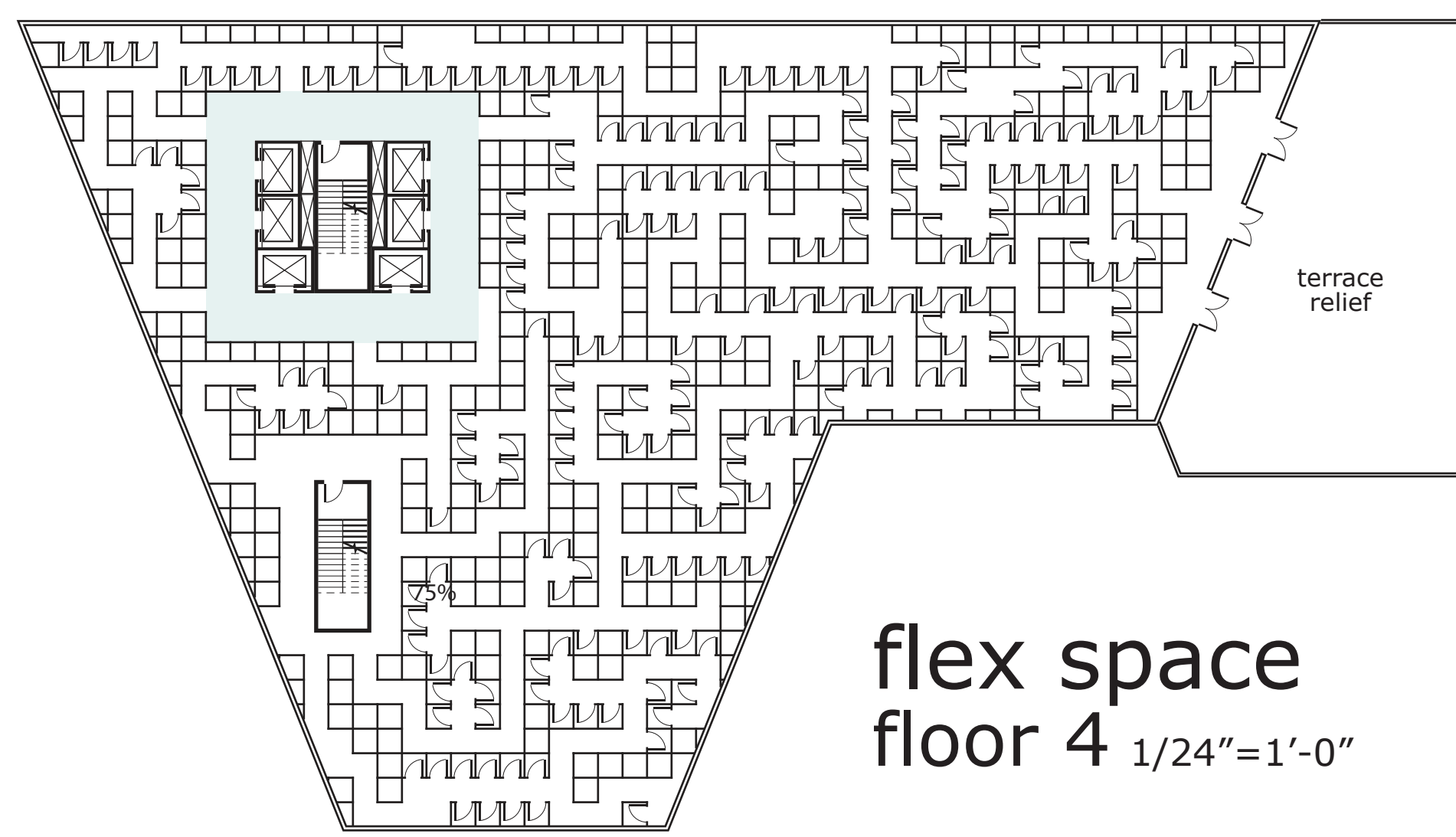
apartments  
floor 14-22 1/24"=1'-0"



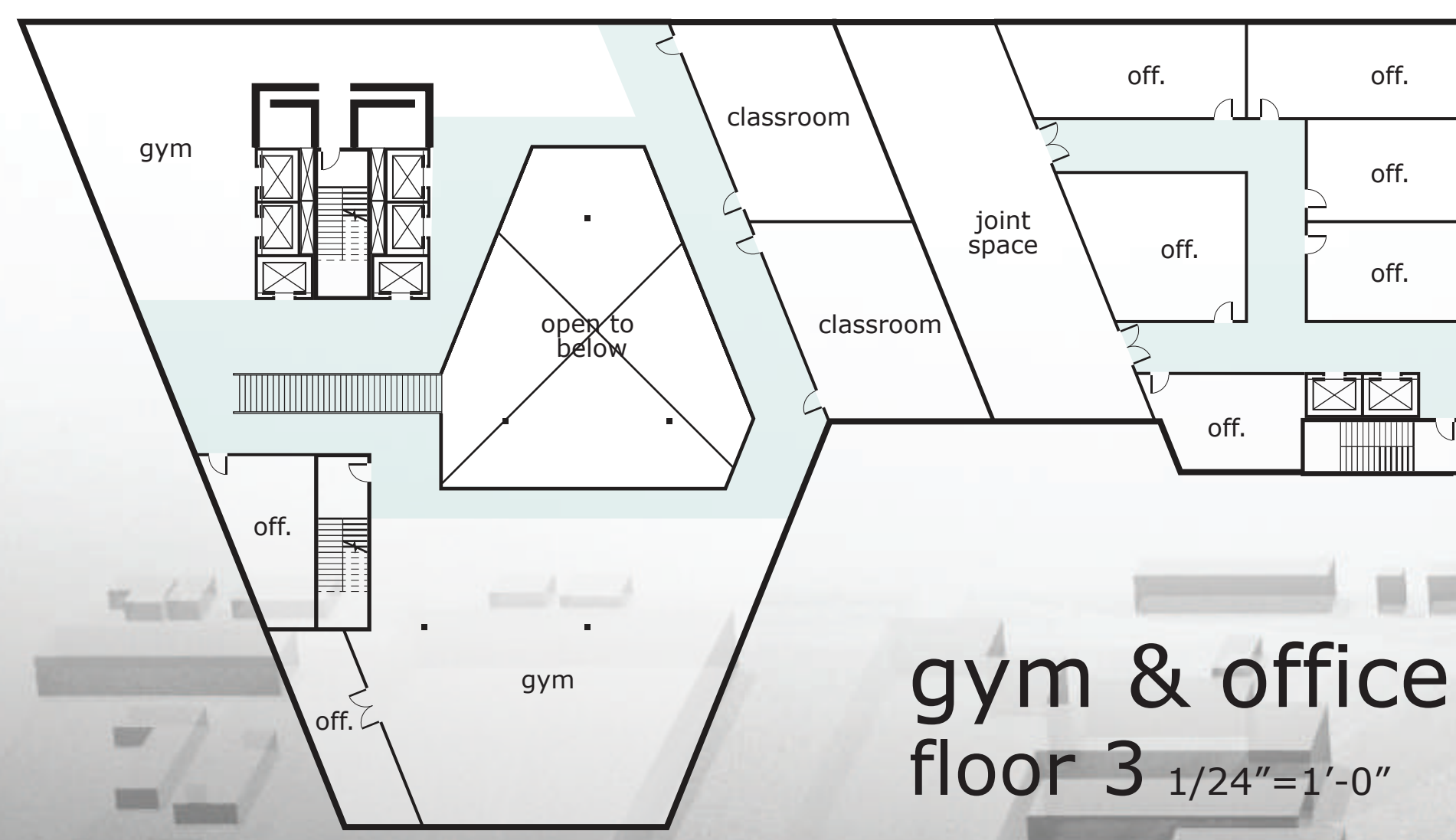
hotel  
floor 6-13 1/24"=1'-0"



gallery & event  
floor 5 1/24"=1'-0"



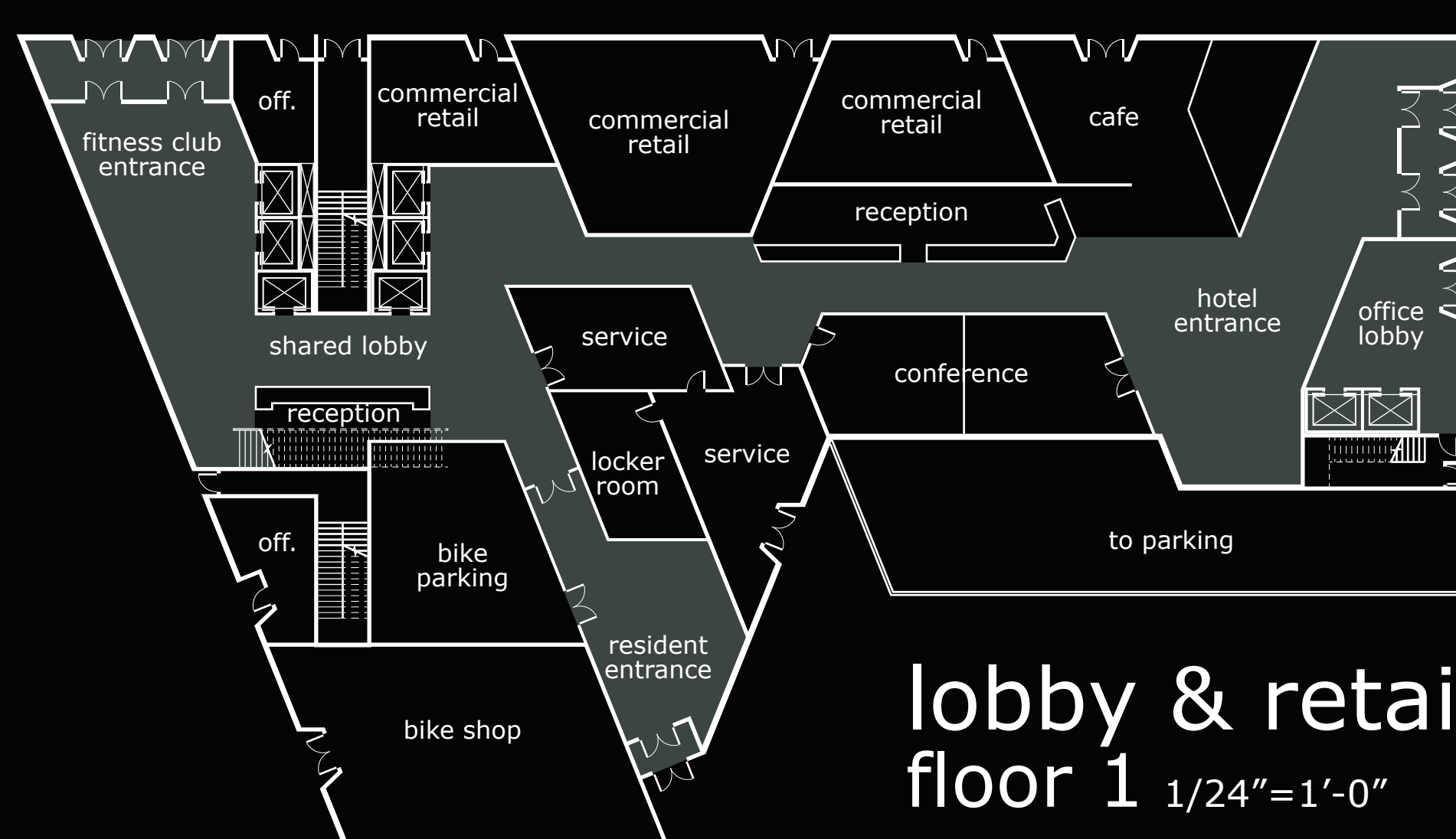
flex space  
floor 4 1/24"=1'-0"



gym & office  
floor 3 1/24"=1'-0"

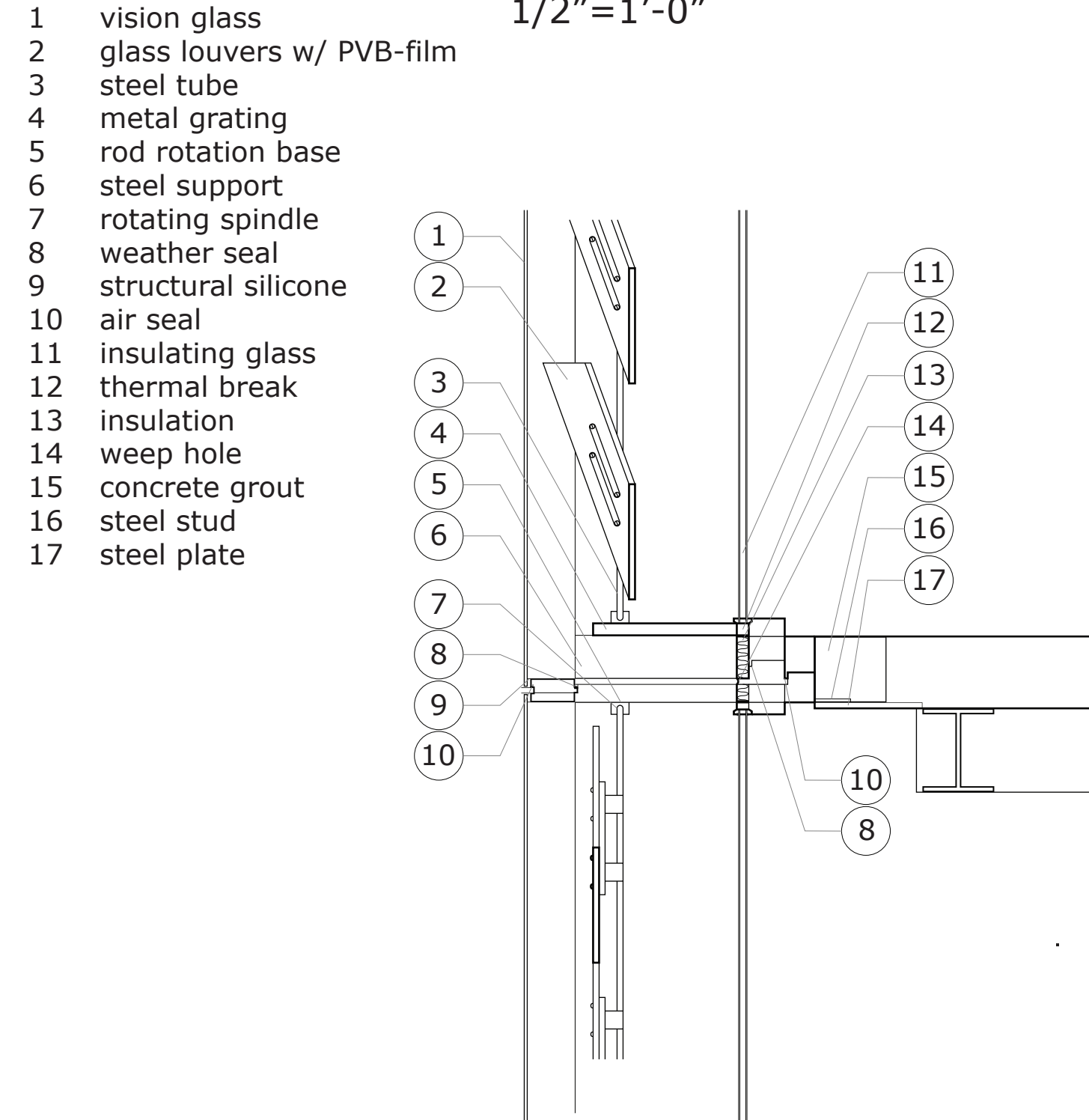


gym & office  
floor 2 1/24"=1'-0"



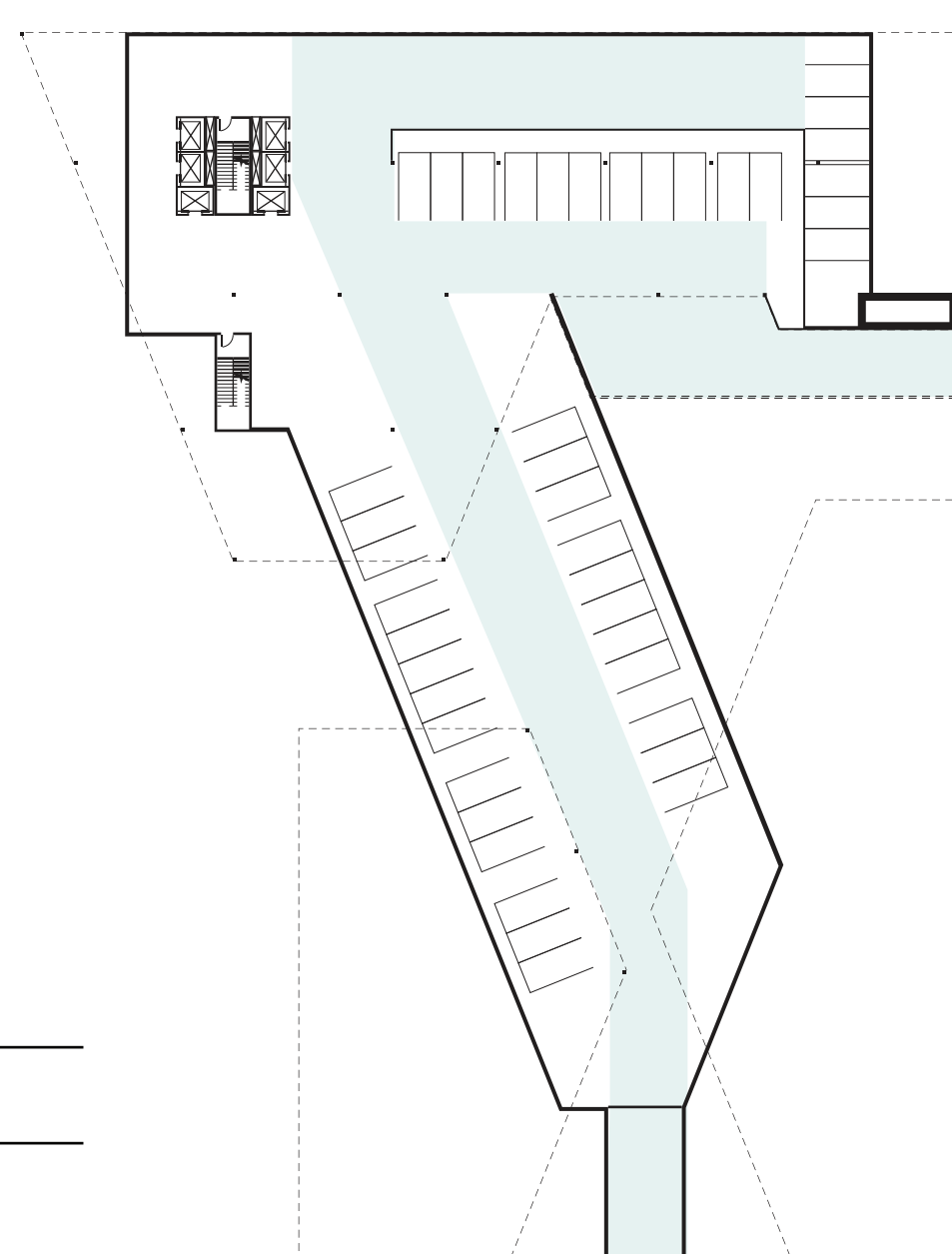
lobby & retail  
floor 1 1/24"=1'-0"

curtain wall section  
1/2"=1'-0"

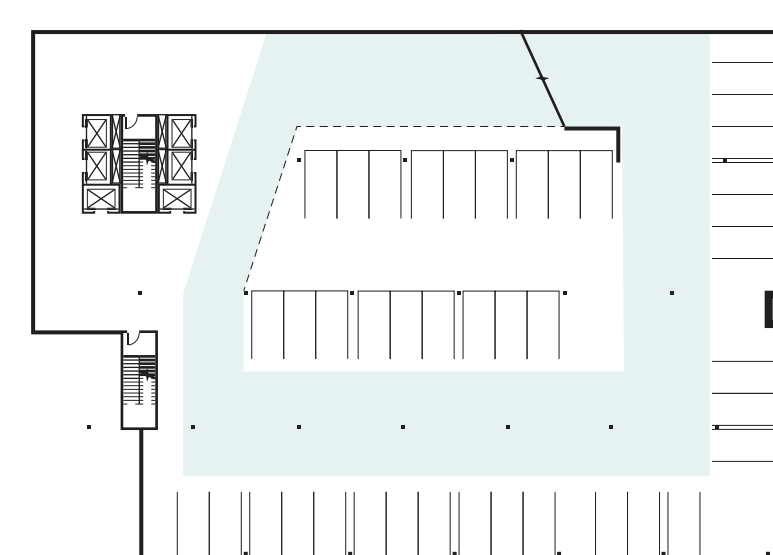


section looking west  
1/40"=1'-0"

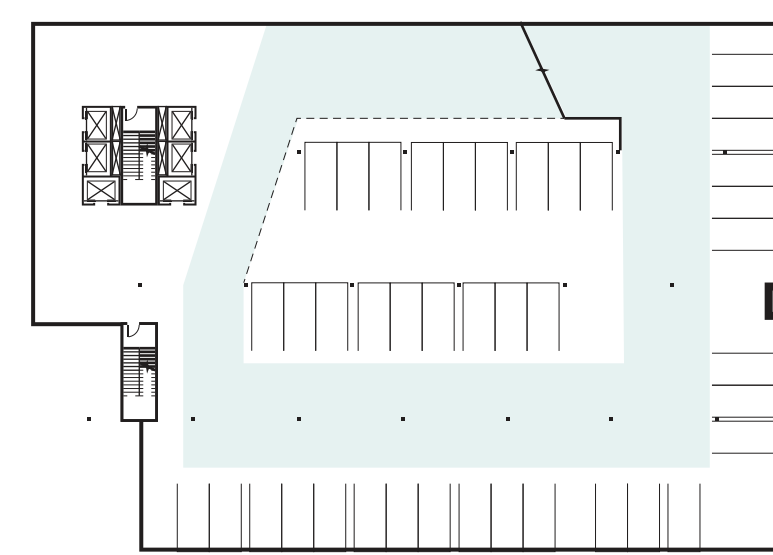
section looking north  
1/40"=1'-0"



b1



b2



b3

underground parking  
1/48"=1'-0"

### community

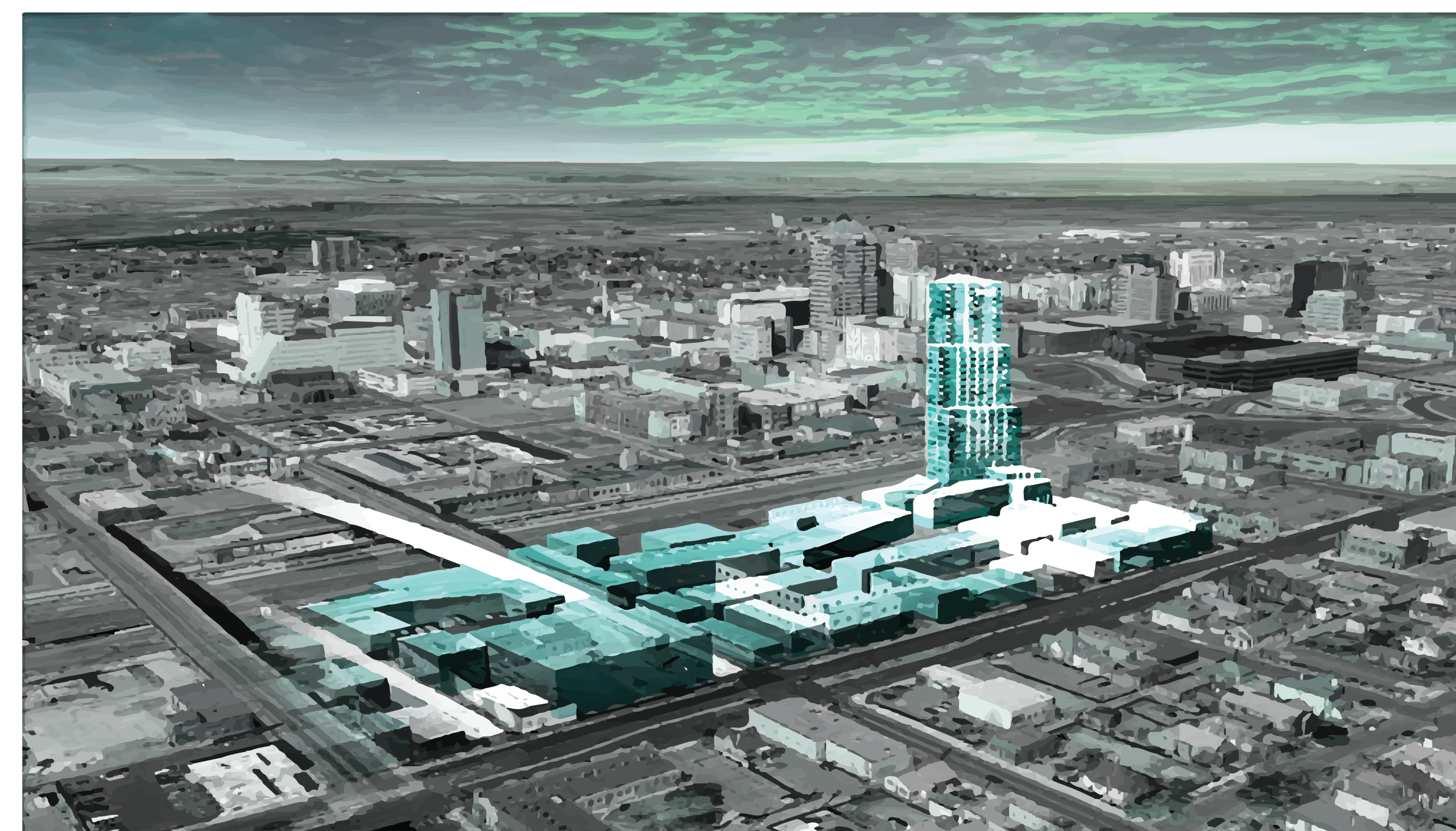
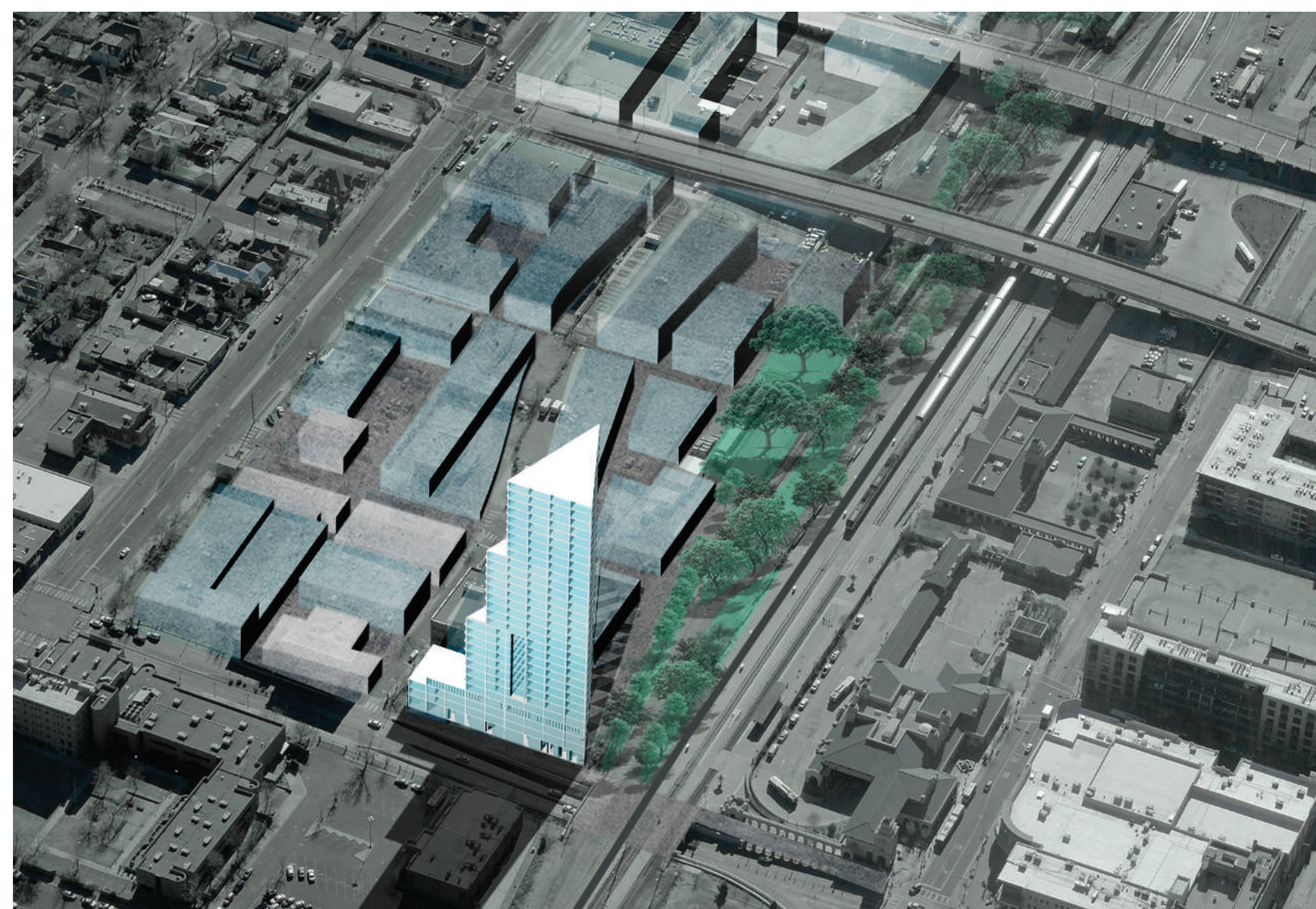
On the fifth floor of Union 1, an open gallery space for art promotes the display of creative expression while also allowing for additional overflow space for Innovate Albuquerque, students, and the creative class alike. An event ballroom and rooftop terrace offer space for community and regionally sanctioned events. An open atrium connecting hotel stayers create an opportunity for interaction beyond the immediate community.

The ballroom and terrace have the capability to be open to the public, residents and tourists. The fifth floor of Union 1 also houses a restaurant and bar, creating a small intimate space for night life and activity.

### inception

The fourth floor integrates flexible studio work space as an opportunity to interact with university students and spark further interest with Innovate Albuquerque located across the street. This flexible space allows for a beginning of creative invention while allowing public interaction; a proposal for a more diverse and engaged community.

In this full-room installation, a maze is constructed which conceptually communicates a sense of impediment. While many students progress forward with high hopes, the opportunity to open new doors will, at times, leave much to be desired. High tensions with each turn and the goal of relief at hand, spectacular views suddenly appear without intention or forewarning. A journey of trials have moments of respite, and although many errors are to be encountered, only through trial and error can success be one day realized.



### reinforcement

On the subsequent 2nd and 3rd floors, a community fitness club and shared office space encourage further interaction and reinforce the complexity of the site.

In order to reinforce this location as a local hotspot, not only were community amenities integrated into the program of the building, form and shape also exemplify sturdiness. Conceptually, the sturdiness of triangles was integrated into plan development, reinforcing this location and this symbolic building. The high-rise mixed-use building helps locate this multi-faceted location and vice versa.

441' high; 34 stories

total area

225 resident units

144 hotel units

parking spaces

structural system

400,000 sqft

350-650 sqft

350-650 sqft

122 spaces

steel frame

# UNION 1

mixed-use hotel and apartment complex  
Albuquerque, New Mexico

Fall 2014  
richard pham  
studio 401

### location and site

The first floor of Union 1 has a mixture of commercial retail and offices. It also houses a shared lobby space for residents and hotel users of the upper floors and members of the fitness club.

Diversity and interaction at the ground level reflect the monumental degree of the intersection at Central Avenue and the train tracks. At an intersection where many means of travel converge, the introduction of an adjacent parkway and Innovate Albuquerque site further enhance this location as an epicenter.

Union 1 is a reflection of this complex condition, responding with a complex program. However, it also proposes a shared lobby and central vertical circulation core; a proposal for increased community welfare and interaction.

site plan and program

structural framing plan

triangulation

