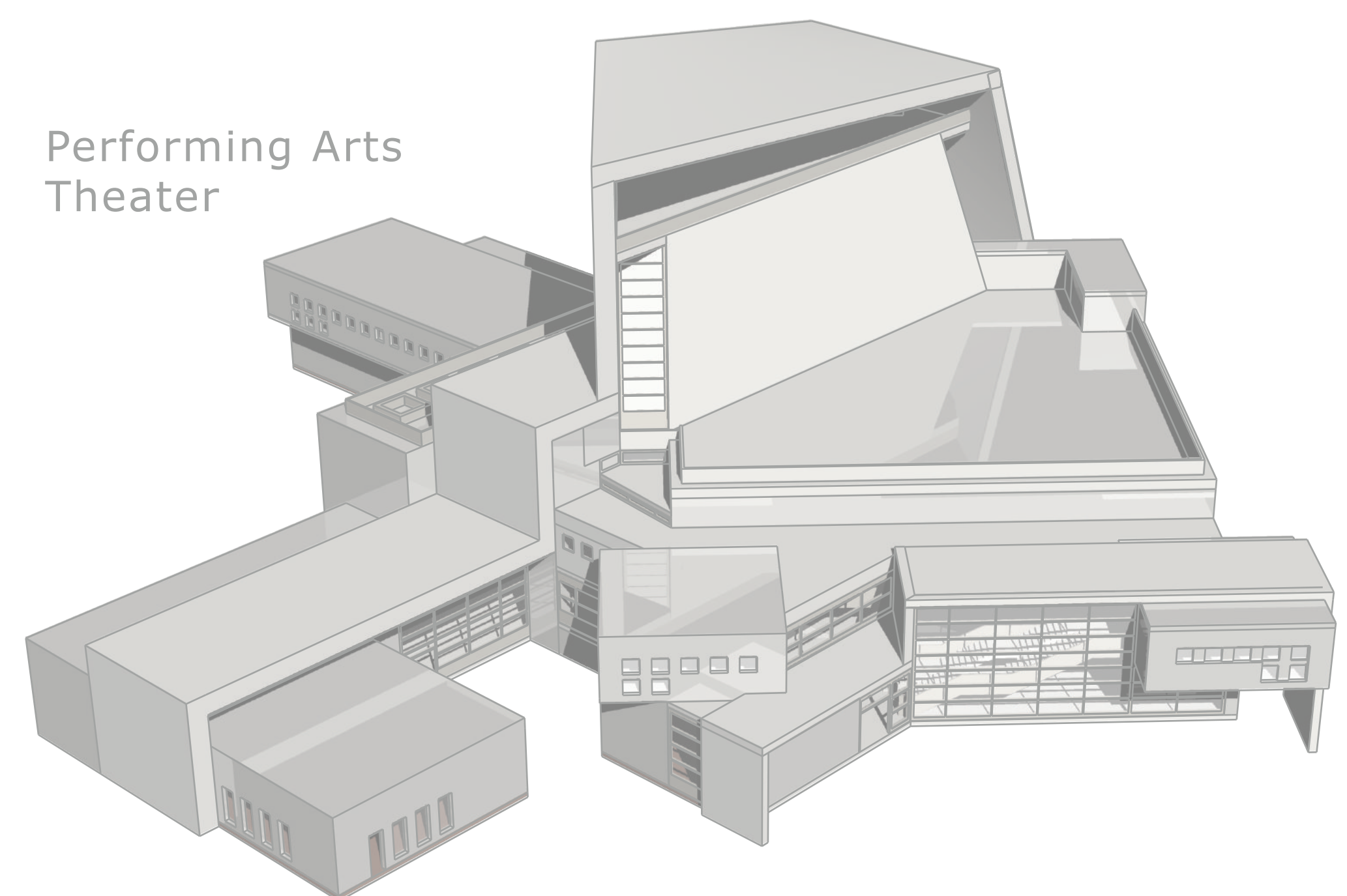
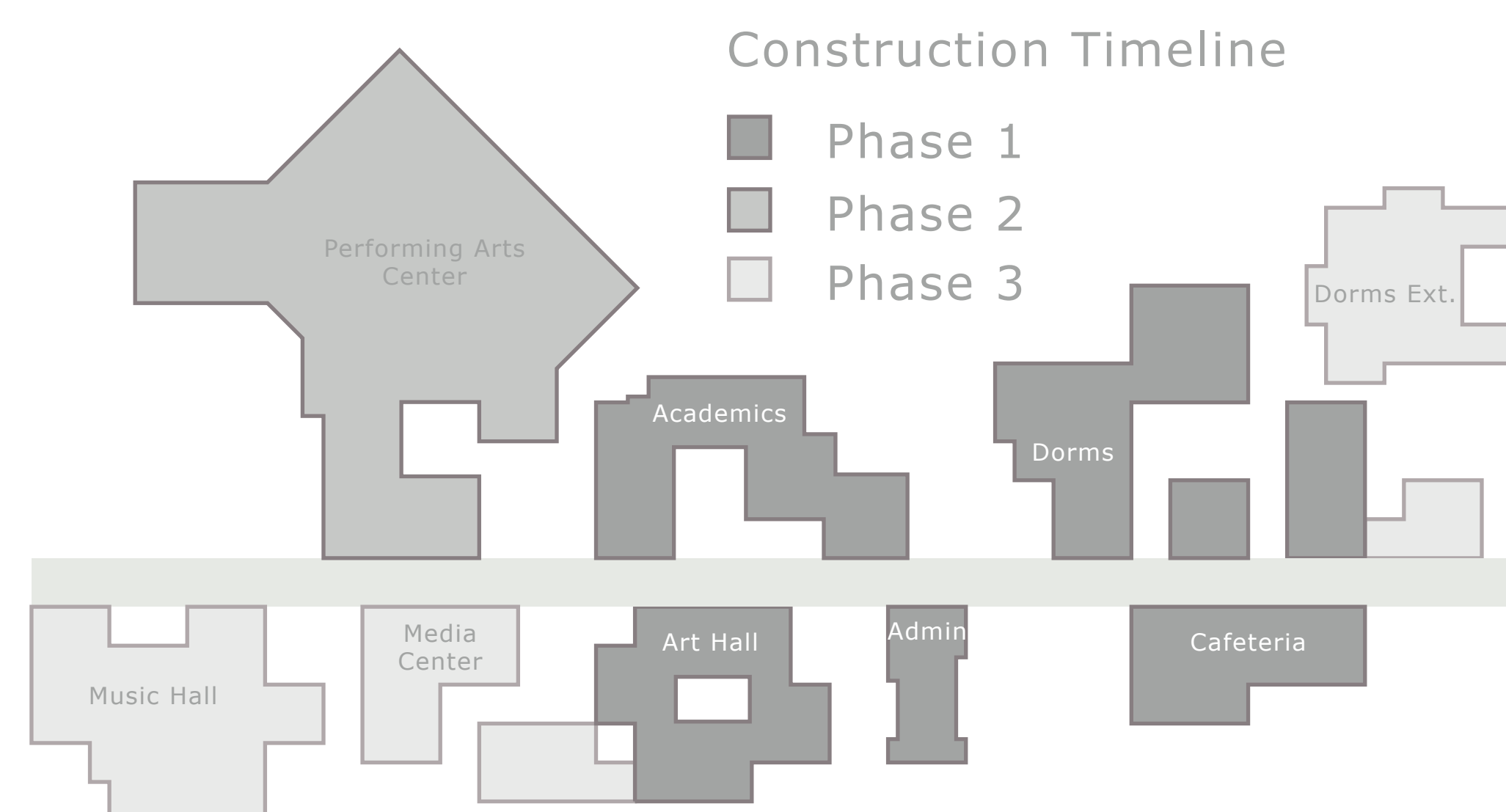
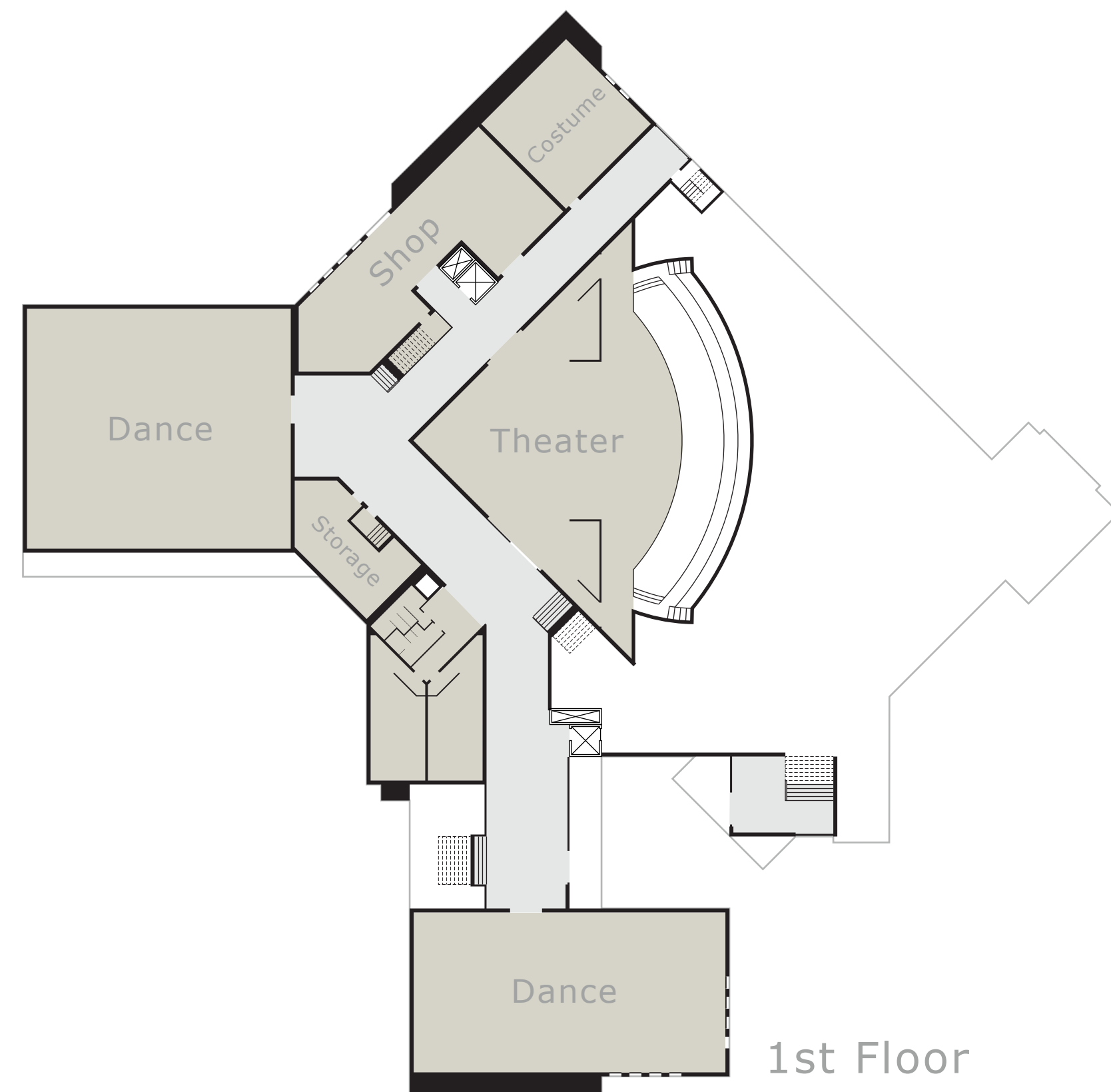
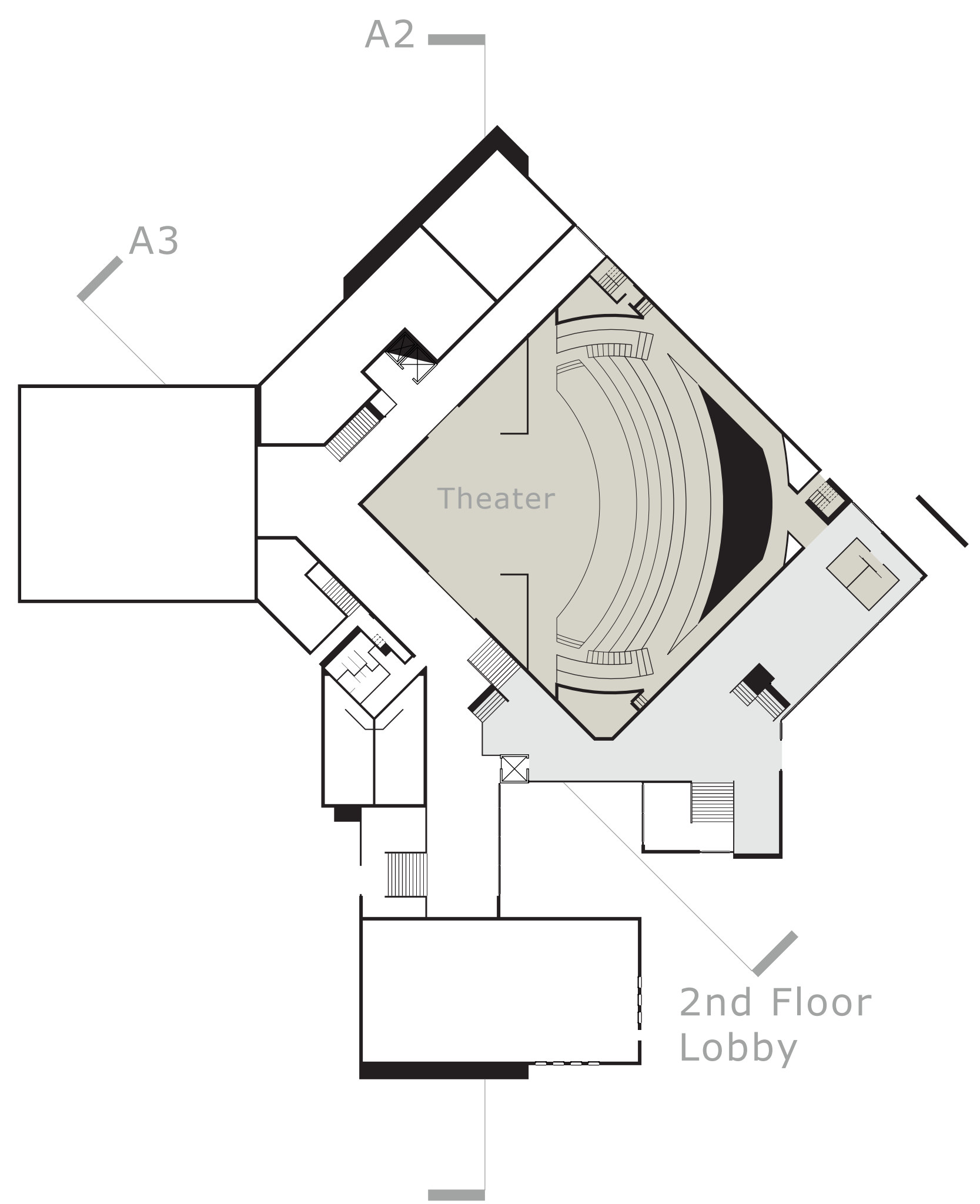
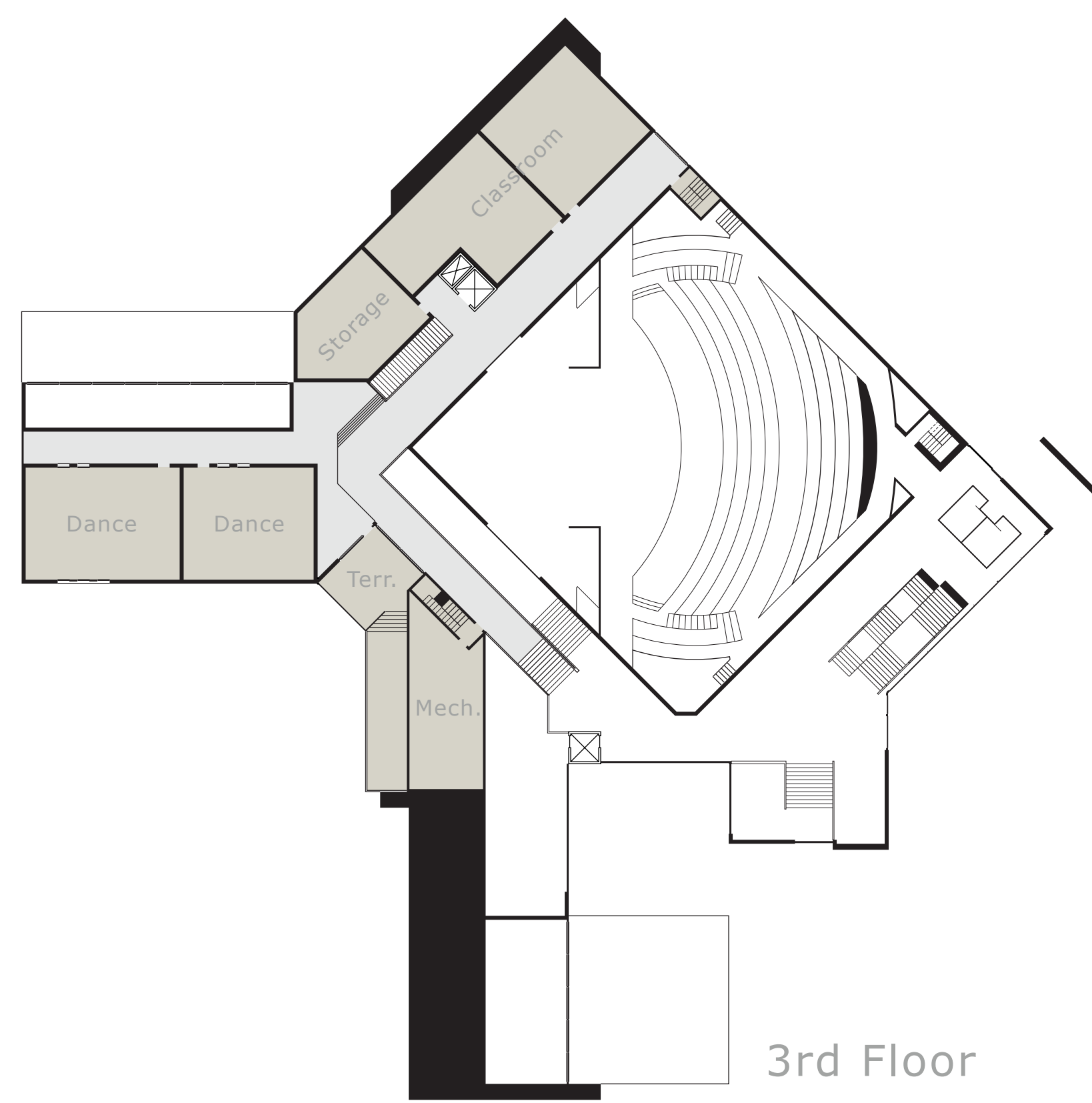
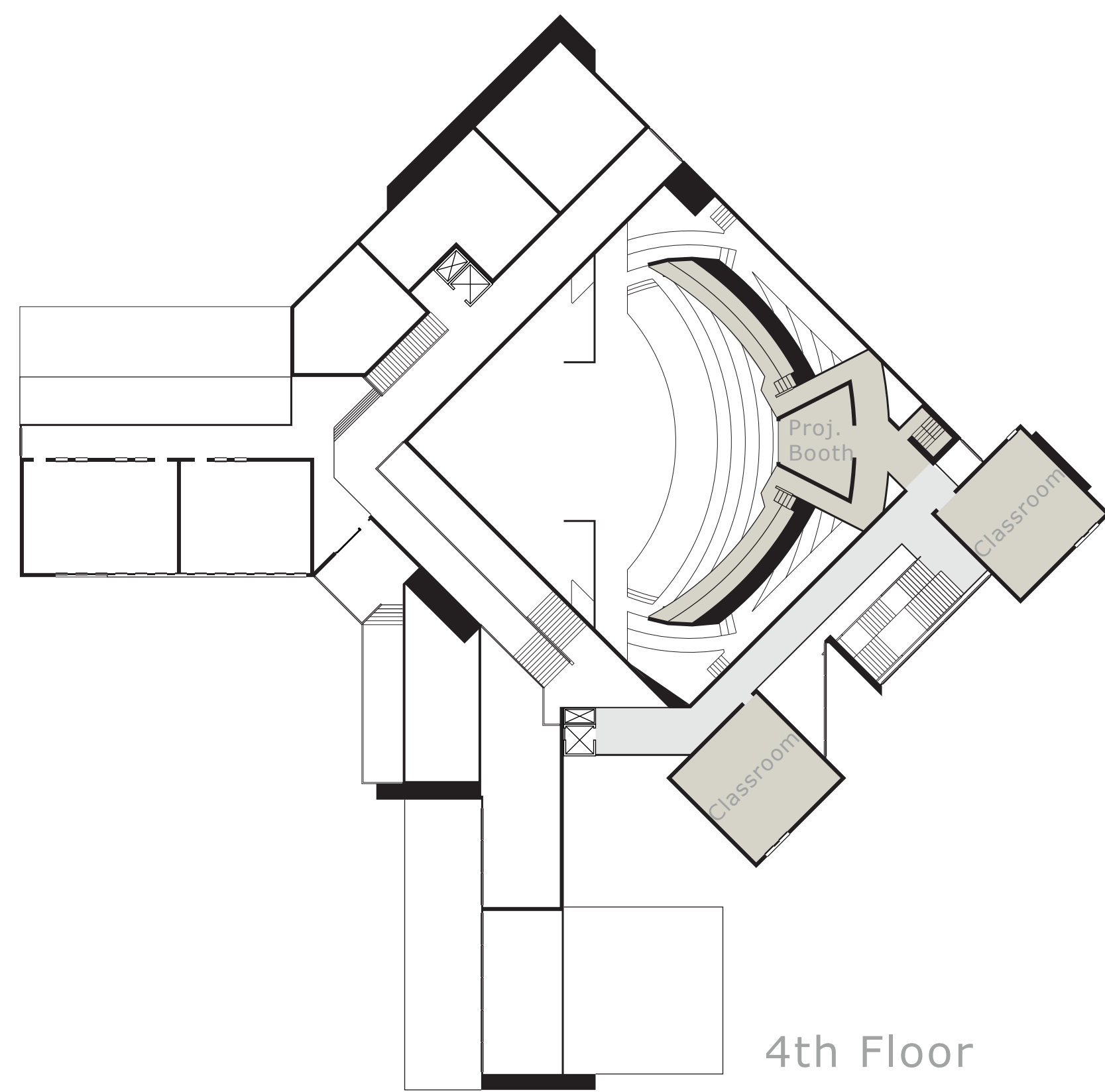
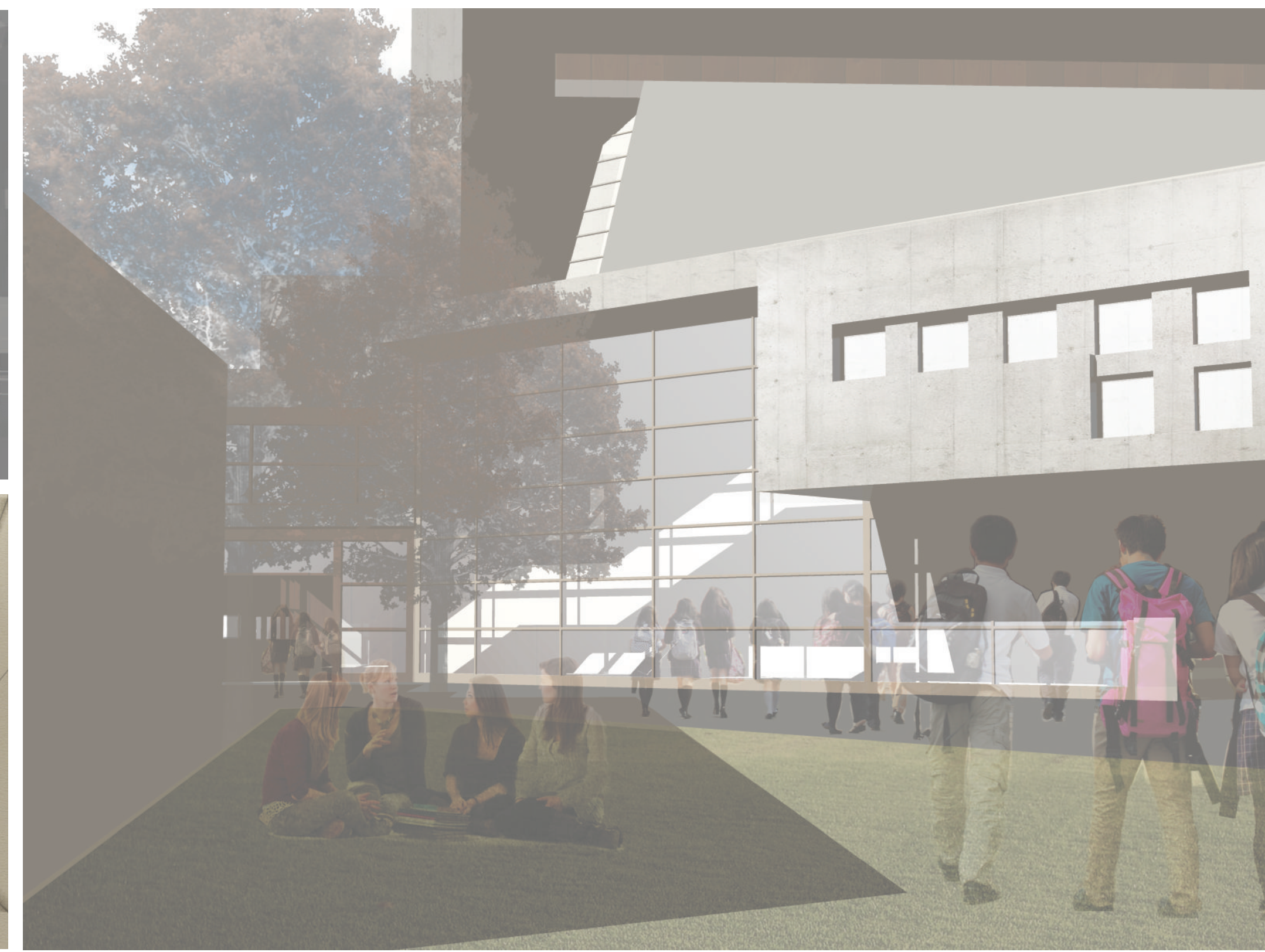
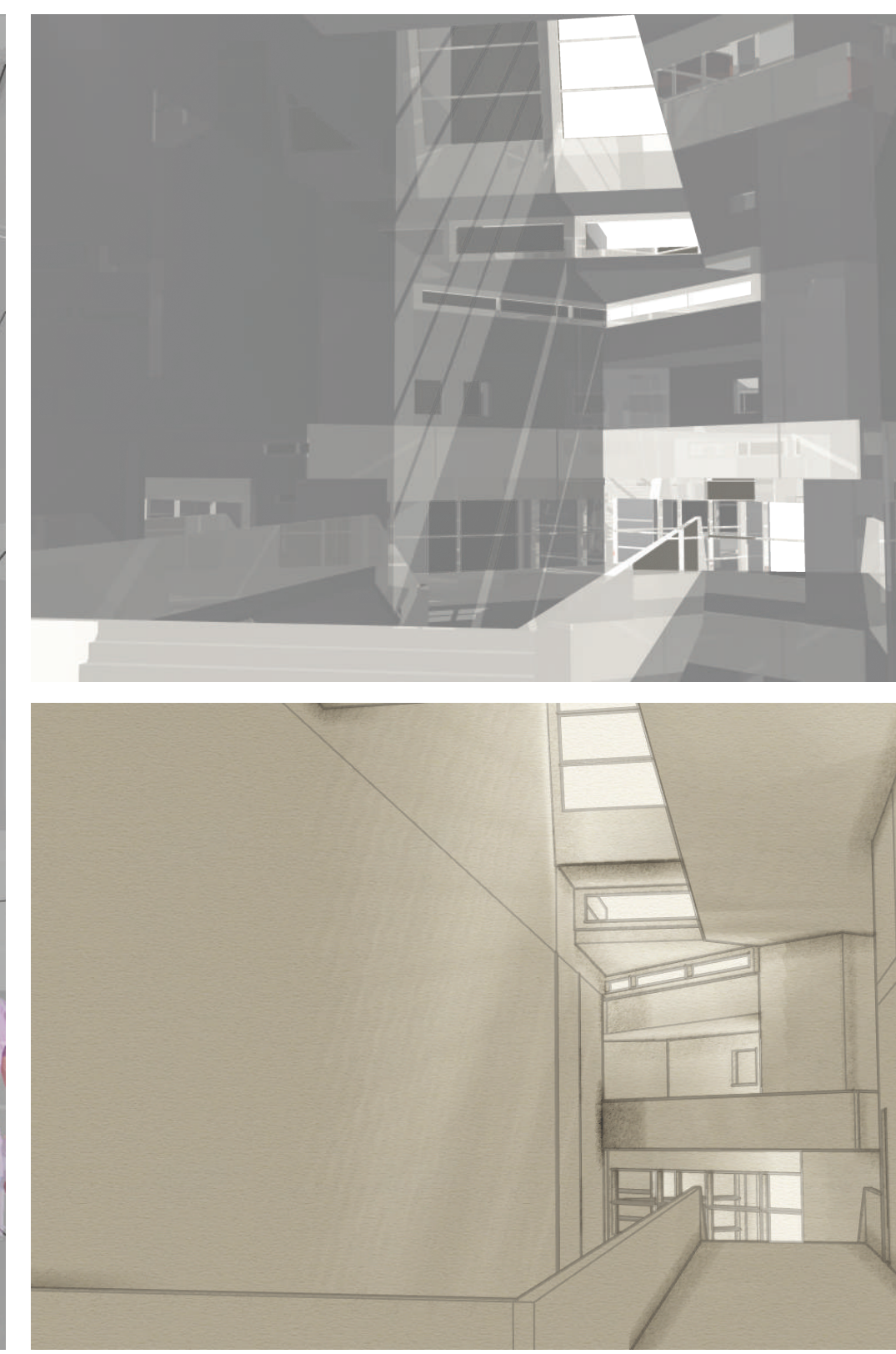
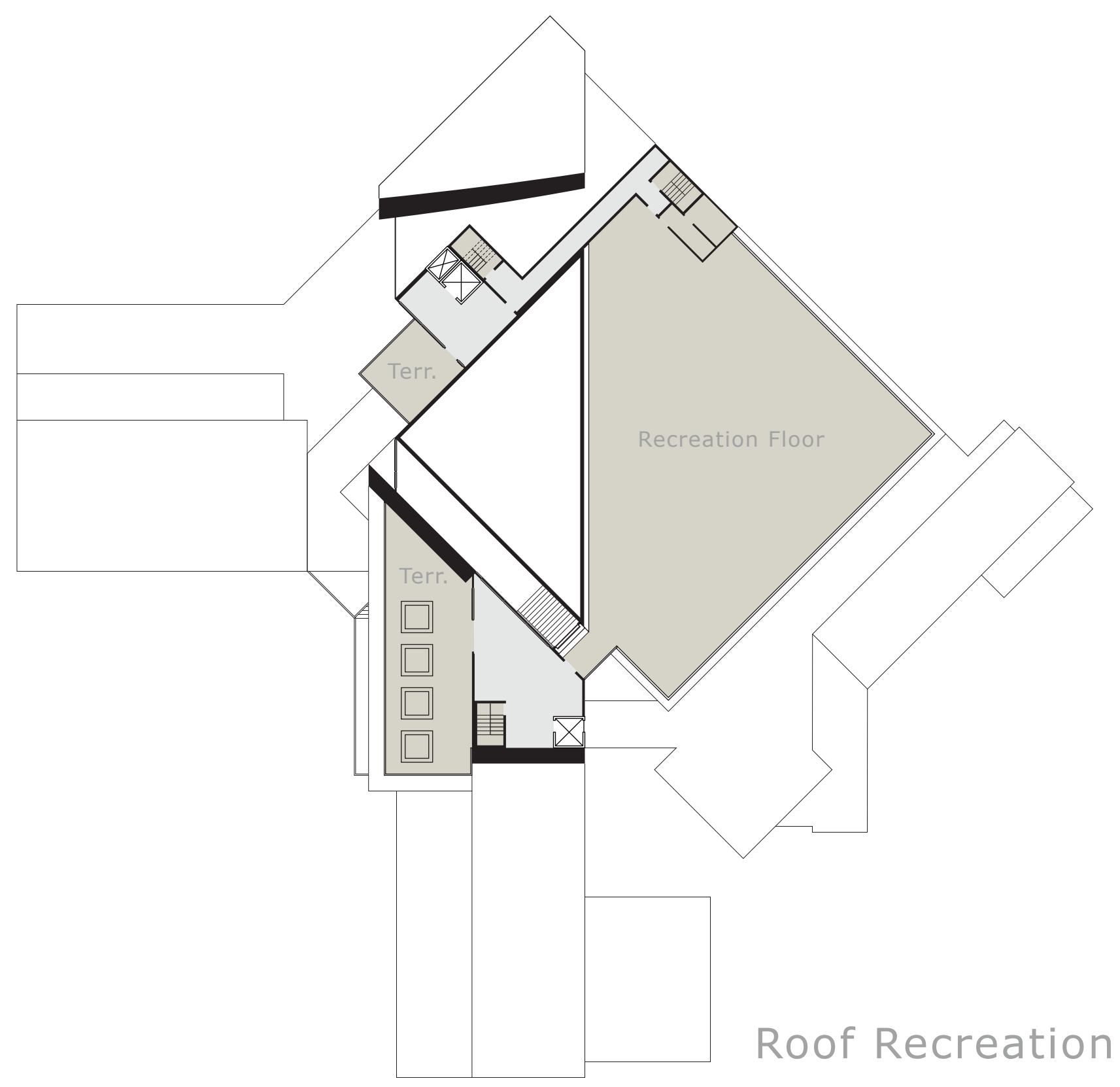


New Mexico School for the Arts

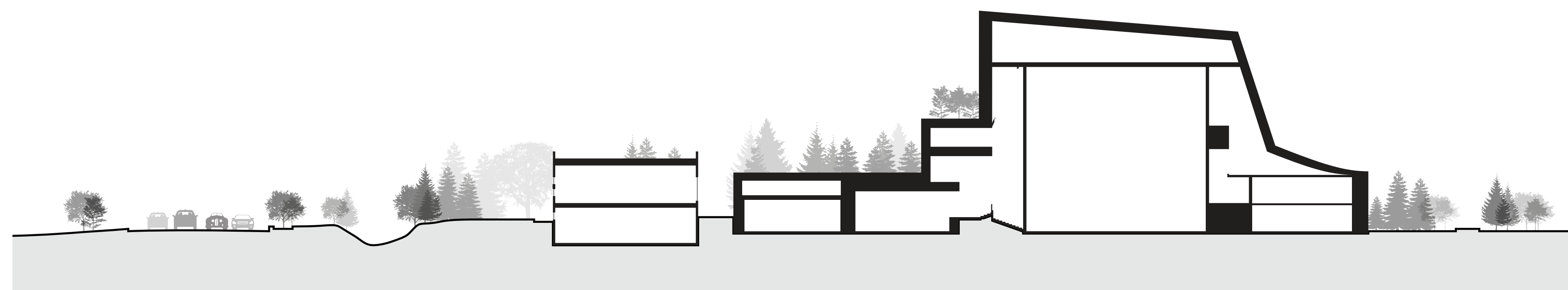
Campus Master Plan

The new campus plan creates a place where motivated individuals may cultivate their talents. The main circulation corridor enables a visual anchor to the Atalaya Mountains to the east. This relationship with the mountain extends into the details of the campus plan, building form, materials, and landscape. Like the mountain, the campus becomes a place where students may both hone the arts of their trade and seek moments of respite and solice.

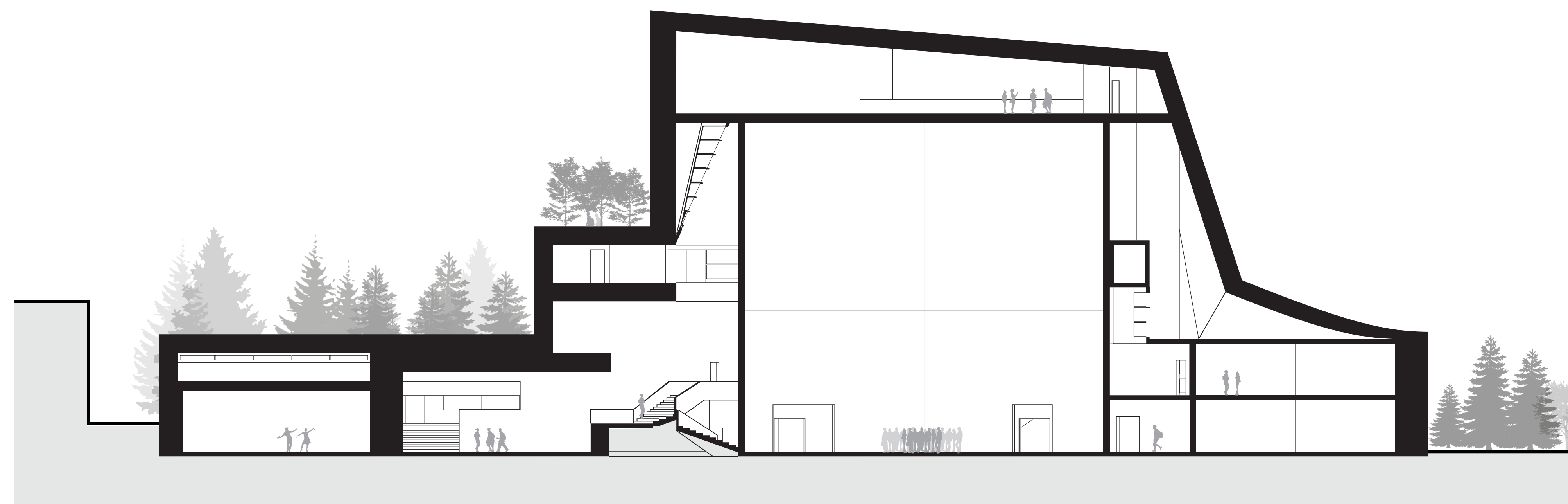




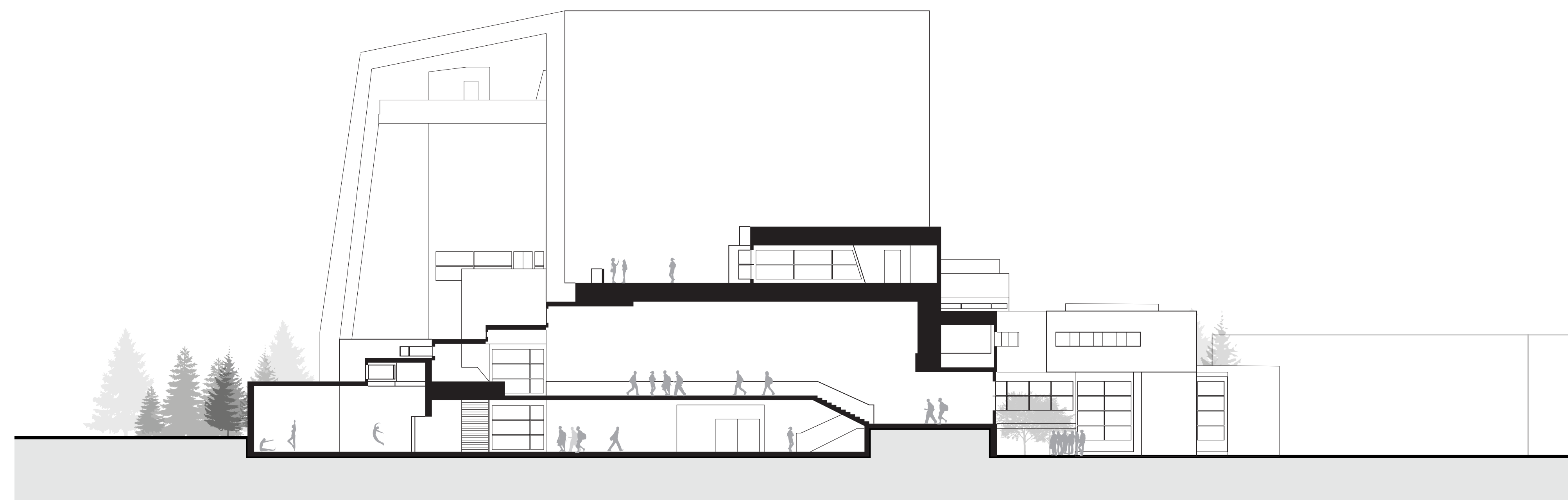
1/32" = 1'-0"



1/32" = 1'-0"



Section A2



1/16" = 1'-0"