

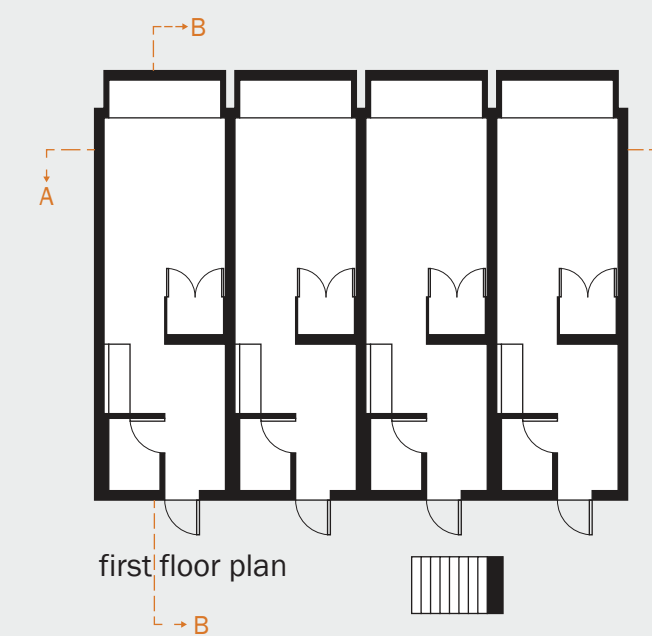
## 1 housing unit



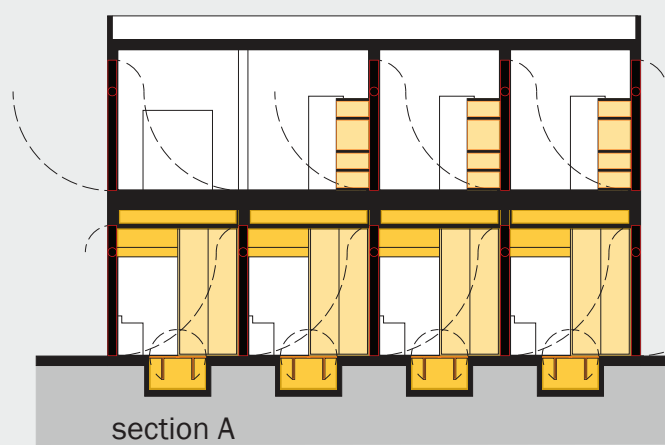
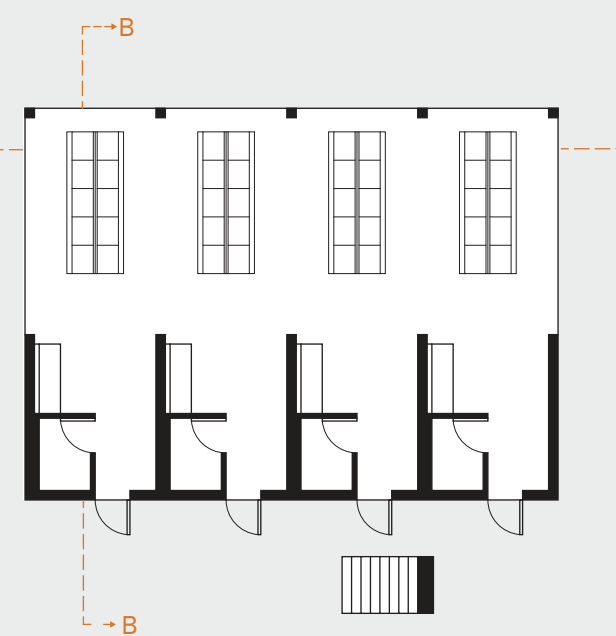
private



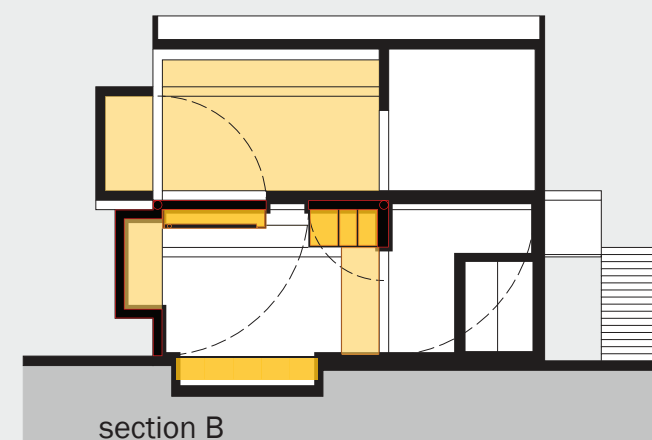
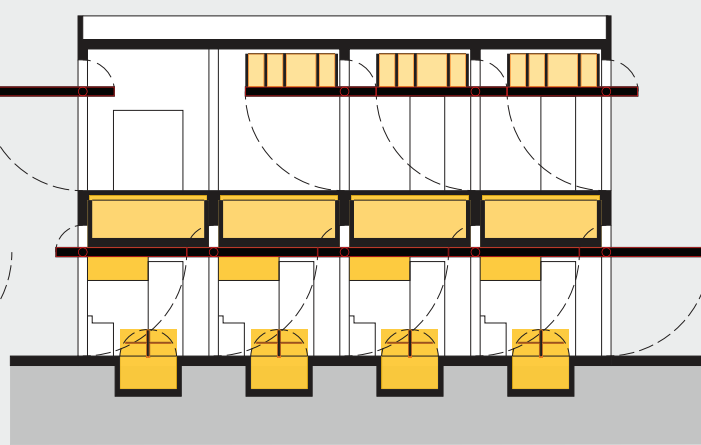
public



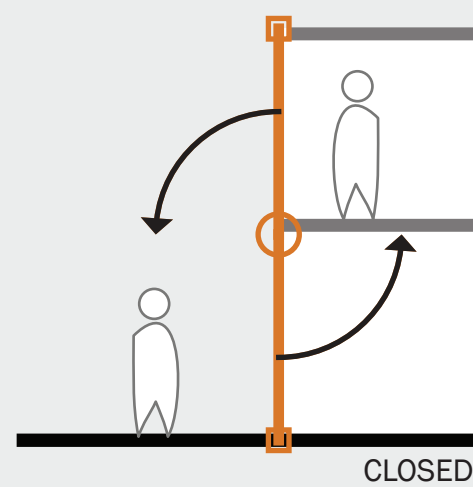
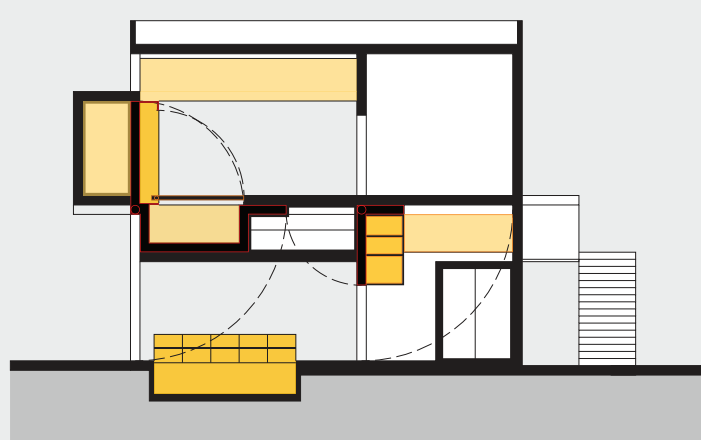
first floor plan



section A

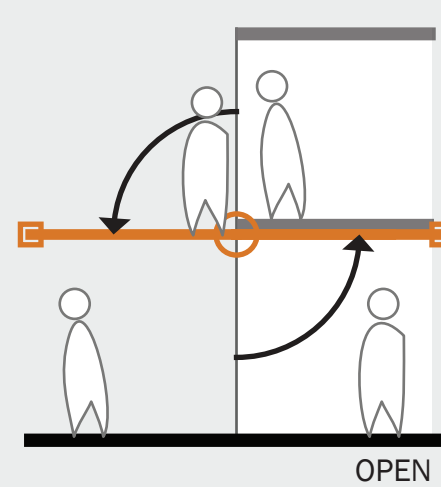


section B



concept diagram

CLOSED



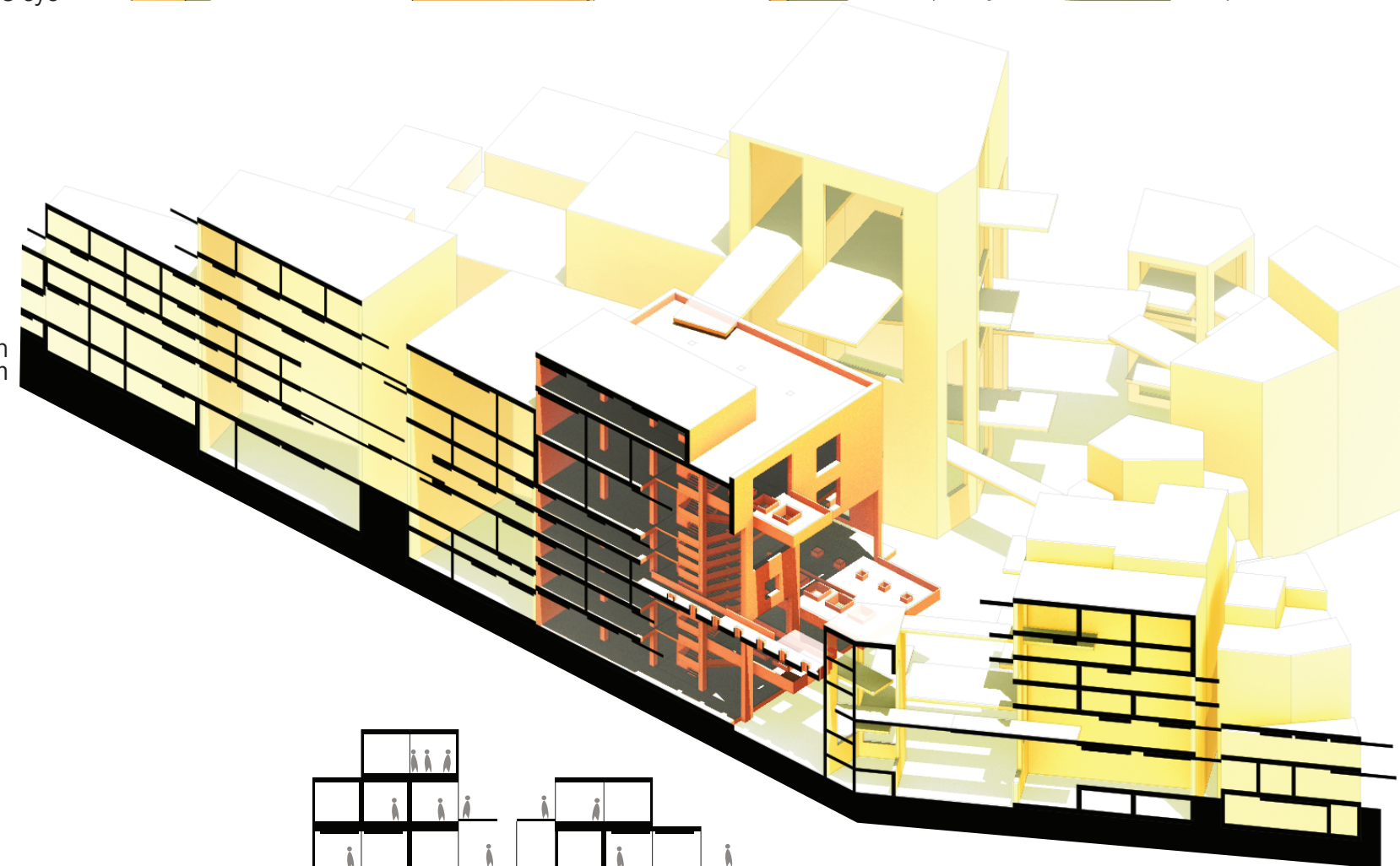
OPEN

## 2 city scale



perspective bird's-eye

isometric section diagram



applied city section diagram



study area 2

study area 1

isometric section

Most architecture today has built walls to define spaces for specific activities. This has resulted in a split between the public and private sectors of cities and has fragmented the daily lifestyle of the average person. In order to achieve diversity within architecture and for the people who utilize it, the wall between private space and public space needs to be reinvented.

The result is a mechanism that facilitates a transformation within architectural space. This transformation reinvents the architectural landscape and allows for spaces to transform during periods of lesser utilization. This transformation creates unique instances of architectural space within the city but also creates unique relationships within the community for those who share the space.

The freedom to transform between public and private enables a new kind of communal space—one that is shared by both the public sector and the private sector as well as shared by individuals and the community. The result is an architectural infrastructure that enables cities the ability to shapeshift at will—opening the ground plane to unimpeded public space, extending public access into the realm of the sky, or creating a section of private space within the interior of the public. In other words, it is a city infrastructure that allows for a vast range of diverse functions, activities, and relationships.

## WALL TRANSPOSITION